



# Our Products



# WHO WE ARE...

---



## UK Design & Manufacture

With its headquarters in Hampshire, UK, Redvision CCTV has decades of experience in the design and manufacture of rugged CCTV solutions. Fully accredited ISO:9001 company, its manufacturing processes and procedures are strictly monitored to ensure the very best in build quality and product reliability.



## Quality Products

Redvision products are synonymous with quality, all moving parts are designed to last; from long-life, tooled silicone wiper to the motor technology used in the pan and tilt mechanisms. Famous for rugged pan and tilt cameras, the X-Series range boasts a marine-grade finish as standard and an MTBF in excess of seven years.



## Rugged CCTV Specialists

The Redvision team has unprecedented knowledge in rugged CCTV products and applications, with in-house experts possessing decades of experience. Redvision understand CCTV products and utilises this expertise to provide the latest in innovative product development, designed to supply quality solutions in tough environments.

# CONTENTS

---



X-Series

---

4 - 19



VEGA  
VEGA Thermal

---

20-23



4G/5G Hub

---

24-27



VMS 1000

---

28-29



Knight Series

---

30-33



RedCop

---

34-35



# X4 COMMANDER

“Our flagship PTZ Camera boasting high performance”

---

# OUR **BEST** IN CLASS...

---

## *The Rugged PTZ Camera*

The X4 Commander utilises state-of-the-art technology to offer a world-class, rugged PTZ camera with a best-in-class, feature set.

The X4 Commander boasts top-notch build quality, featuring a long-life silicone wiper, advanced motor technology for its pan and tilt mechanism, and a 37x optical zoom camera module with exceptional low-light performance. Additionally, the camera's perfect balance ensures an MTBF rating exceeding 7 years.

## *Typical Applications*



Town Centres



Highways



Oil & Gas

## *Key Features*

- **UK Design and Manufacture**
- 1/1.8" super low-light CMOS 4MP sensor with 37x optical zoom
- **Smart IR, up to 500m detection; with White Light options**
- Rugged, marine-grade finish as standard
- **Tooled, soft silicone long-life wiper as standard**



# X4 PRODUCT CODES



## X4 COMMANDER RAL 7035 Light Grey No Illumination

RVX4S-G	37:1 4MP Zoom Ball PTZ, WIPER - Light Grey
RVX4S-POE-G	37:1 4MP Zoom Ball PTZ, WIPER. High-PoE (802.3bt) 60W - Light Grey
RVX4S-ALM-G	37:1 4MP Zoom Ball PTZ, 4 alarm inputs, 2 alarm outputs, WIPER - Light Grey



## X4 COMMANDER RAL 9005 Black No Illumination

RVX4S-B	37:1 4MP Zoom Ball PTZ, WIPER - Black
RVX4S-POE-B	37:1 4MP Zoom Ball PTZ, WIPER. High-PoE (802.3bt) 60W - Black
RVX4S-ALM-B	37:1 4MP Zoom Ball PTZ, 4 alarm inputs, 2 alarm outputs, WIPER - Black



## X4 COMMANDER RAL 7035 Light Grey IR Illumination

RVX4S-IR-G	37:1 4MP Zoom Ball PTZ, IR, WIPER - Light Grey
RVX4S-POE-IR-G	37:1 4MP Zoom Ball PTZ, IR, WIPER. High-PoE (802.3bt) 90W - Light Grey
RVX4S-ALM-IR-G	37:1 4MP Zoom Ball PTZ, 4 alarm inputs, 2 alarm outputs, IR, WIPER - Light Grey



## X4 COMMANDER RAL 9005 Black IR Illumination

RVX4S-IR-B	37:1 4MP Zoom Ball PTZ, IR, WIPER - Black
RVX4S-POE-IR-B	37:1 4MP Zoom Ball PTZ, IR, WIPER. High-PoE (802.3bt) 90W - Black
RVX4S-ALM-IR-B	37:1 4MP Zoom Ball PTZ, 4 alarm inputs, 2 alarm outputs, IR, WIPER - Black



## X4 COMMANDER RAL 7035 Light Grey IR EXTRA Illumination

RVX4S-IRX-G	37:1 4MP Zoom Ball PTZ, Extra Long Range IR up to 500m, WIPER - Light Grey
RVX4S-POE-IRX-G	37:1 4MP Zoom Ball PTZ, Extra Long Range IR up to 500m, WIPER. High-PoE (802.3bt) 90W - Light Grey
RVX4S-ALM-IRX-G	37:1 4MP Zoom Ball PTZ, 4 alarm inputs, 2 alarm outputs, Extra Long Range IR up to 500m, WIPER - Light Grey



## X4 COMMANDER RAL 9005 Black IR EXTRA Illumination

RVX4S-IRX-B	37:1 4MP Zoom Ball PTZ, Extra Long Range IR up to 500m, WIPER - Black
RVX4S-POE-IRX-B	37:1 4MP Zoom Ball PTZ, Extra Long Range IR up to 500m, WIPER. High-PoE (802.3bt) 90W - Black
RVX4S-ALM-IRX-B	37:1 4MP Zoom Ball PTZ, 4 alarm inputs, 2 alarm outputs, Extra Long Range IR up to 500m, WIPER - Black



## X4 COMMANDER RAL 7035 Light Grey Dual IR / White Light

RVX4S-IRWL-G	37:1 4MP Zoom Ball PTZ, IR/ White Light, WIPER - Light Grey
RVX4S-POE-IRWL-G	37:1 4MP Zoom Ball PTZ, IR/ White Light, WIPER. High-PoE (802.3bt) 90W - Light
RVX4S-ALM-IRWL-G	37:1 4MP Zoom Ball PTZ, 4 alarm inputs, 2 alarm outputs, IR/ White Light, WIPER - Light Grey



## X4 COMMANDER RAL 9005 Black Dual IR / White Light

RVX4S-IRWL-B	37:1 4MP Zoom Ball PTZ, IR/ White Light, WIPER - Black
RVX4S-POE-IRWL-B	37:1 4MP Zoom Ball PTZ, IR/ White Light, WIPER. High-PoE (802.3bt) 90W - Black
RVX4S-ALM-IRWL-B	37:1 4MP Zoom Ball PTZ, 4 alarm inputs, 2 alarm outputs, IR/ White Light, WIPER - Black



## X4 COMMANDER Power Supply

RVX2-PSU	24V DC PSU for X2/X3/X4 non alarm and alarm ball PTZ
----------	--



## X4 COMMANDER PoE Injector

RV-POE-INJ-90W	90W Single Port Multi-Gig Power over Ethernet Midspan IEEE 802.3bt Compliant Power Injector
----------------	---



## X4 COMMANDER Cable

RVX2-CABLE-5	X2/X3/X4 composite cable, compatible with non alarm ball PTZ - 5m
RVX2-CABLE-10	X2/X3/X4 composite cable, compatible with non alarm ball PTZ - 10m
RVX2-CABLE-20	X2/X3/X4 composite cable, compatible with non alarm ball PTZ - 20m



**X4 COMMANDER Alarm Cable**

RVX2-CABLE-ALM-5  
RVX2-CABLE-ALM-10

X2/X3/X4 composite cable, compatible with alarms ball PTZ - 5m  
X2/X3/X4 composite cable, compatible with alarms ball PTZ - 10m

**X4 COMMANDER Additional options to be specified with order**

RVX4-SD Factory fitted 128 GB on board SD - MUST BE ORDERED WITH CAMERA  
RVX4-PC4 4mm Polycarbonate Window Option  
RVX4-3PC4 4mm Polycarbonate Window and 3mm Polycarbonate Lamp Window Option  
RVX4-BIRD-SPIKE Multiple Anti-Perch Bird Spike Attachment



**X4 COMMANDER Brackets - Wall**

RVX4-WALL-G  
RVX4-WALL-B

Wall mount bracket - Light Grey  
Wall mount bracket - Black



**X4 COMMANDER Brackets - Swan**

RVX4-SWAN-G  
RVX4-SWAN-B

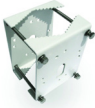
Swan mount bracket - Light Grey  
Swan mount bracket - Black



**X4 COMMANDER Brackets - Standoff**

RVX4-STANDOFF-G  
RVX4-STANDOFF-B

120 mm Standoff mount bracket - Light Grey  
120 mm Standoff mount bracket - Black



**X4 COMMANDER Accessories - Pole**

RVX4-POLE-G  
RVX4-POLE-B

Pole mount adaptor 60-90mm for RVX4-WALL - Light Grey  
Pole mount adaptor 60-90mm for RVX4-WALL - Black



**X4 COMMANDER Accessories - Corner**

RVX4-CNR-G  
RVX4-CNR-B

Corner Mount adapter for RVX4-WALL - Light Grey  
Corner Mount adapter for RVX4-WALL - Black



**X4 COMMANDER Special Paint Colours**

RVX4-PAINT-SPEC

Cost per dome & associated bracket for special colours – must specify RAL reference number





# X3

## STORM

“A corrosion-resistant rugged PTZ built for harsh environments”



# OUR MOST RUGGED...

---

## An Ultra Rugged PTZ Camera

The X3-STORM rugged, ball PTZ camera is crafted for surveillance in the harshest environments.

The camera body is made from Electropolished 316 Stainless-Steel, resisting vandalism and extreme conditions. The robust body is complimented by a first-class feature set, ensuring superior resilience and image quality.

## Typical Applications



Tunnels



Coastal



Mining

## Key Features

- **Ultra-rugged, marine-grade 316 stainless steel camera body**
- 1/2.8" super low-light CMOS 4MP sensor with 30x optical zoom
- **UK Design and Manufacture**
- Smart IR, up to 300m detection; with White Light options
- **Tooled, soft silicone long-life wiper as standard**

# X3 PRODUCT CODES



## X3 STORM Electropolished Finish No Illumination

RVX3S	30:1 4MP, 316 Stainless Steel Zoom Ball PTZ, WIPER - Electropolished finish
RVX3S-POE	30:1 4MP, 316 Stainless Steel Zoom Ball PTZ, WIPER. High-PoE (802.3bt) 60W - Electropolished finish
RVX3S-ALM	30:1 4MP, 316 Stainless Steel Zoom Ball PTZ, 4 alarm inputs, 2 alarm outputs, WIPER - Electropolished finish



## X3 STORM Electropolished Finish IR Illumination

RVX3S-IR	30:1 4MP, 316 Stainless Steel Zoom Ball PTZ, IR, WIPER - Electropolished finish
RVX3S-POE-IR	30:1 4MP, 316 Stainless Steel Zoom Ball PTZ, IR, WIPER. High-PoE (802.3bt) 90W - Electropolished finish
RVX3S-ALM-IR	30:1 4MP, 316 Stainless Steel Zoom Ball PTZ, 4 alarm inputs, 2 alarm outputs, IR, WIPER - Electropolished finish



## X3 STORM Electropolished Finish Dual IR / White light

RVX3S-IRWL	30:1 4MP, 316 Stainless Steel Zoom Ball PTZ, IR & White Light, WIPER - Electropolished finish
RVX3S-POE-IRWL	30:1 4MP, 316 Stainless Steel Zoom Ball PTZ, IR & White Light, WIPER. High-PoE (802.3bt) 90W - Electropolished finish
RVX3S-ALM-IRWL	30:1 4MP, 316 Stainless Steel Zoom Ball PTZ, 4 alarm inputs, 2 alarm outputs, IR and White Light, WIPER - Electropolished finish



## X3 STORM Power Supply

RVX2-PSU	24V DC PSU for X2/X3/X4 non alarm and alarm ball PTZ
----------	--



## X3 STORM PoE Injector

RV-POE-INJ-90W	90W Single Port Multi-Gig Power over Ethernet Midspan IEEE 802.3bt Compliant Power Injector
----------------	---





### X3 STORM Wall Bracket

RVX3-WALL      Stainless Steel Wall mount bracket - Electropolished Finish



### X3 STORM Standoff Bracket

RVX3-STANDOFF      120 mm Stainless Steel Standoff mount bracket - Electropolished Finish



### X3 STORM Cable

RVX2-CABLE-5	X2/X3/X4 composite cable, compatible with non alarm ball PTZ - 5m
RVX2-CABLE-10	X2/X3/X4 composite cable, compatible with non alarm ball PTZ - 10m
RVX2-CABLE-20	X2/X3/X4 composite cable, compatible with non alarm ball PTZ - 20m



### X3 STORM Alarm Cable

RVX2-CABLE-ALM-5	X2/X3/X4 composite cable, compatible with alarms ball PTZ - 5m
RVX2-CABLE-ALM-10	X2/X3/X4 composite cable, compatible with alarms ball PTZ - 10

### X3 STORM Additional options to be specified with order

RVX3-SD	Factory fitted 128 GB on board SD - MUST BE ORDERED WITH CAMERA
RVX3-PC4	4mm Polycarbonate Ball Window Option
RVX3-3PC4	4mm Polycarbonate Ball Window and 3mm Polycarbonate Lamp Window option
RVX3-VISOR	Stainless Steel Sun & rain Visor (only applies when camera is mounted in upright position)
RVX3-CNR	Stainless Steel Corner Mount adapter for RVX3-WALL - Electropolished finish

### X3 STORM SPECIAL PAINT COLOURS

RVX3-PAINT-SPEC      Cost per dome & associated bracket for special colours – must specify RAL reference number





# X2 COMBAT

“Our best selling rugged PTZ camera for any environment”

---

# THE TREND SETTER...

---



## Our Original Rugged PTZ Camera

Crafted for challenging outdoor surveillance applications, the X2-COMBAT rugged, ball PTZ cameras employ cutting-edge production techniques and state-of-the-art technology to deliver a world-class CCTV camera with unmatched features. The die-cast aluminium body is pretreated prior to powder coating, enhancing environmental resilience and protection against malicious attacks or vandalism.

## Typical Applications



Town Centres



Custodial



CNI

## Key Features

- UK Design and Manufacture
- 1/2.8" super low-light CMOS 4MP sensor with 30x optical zoom
- Smart IR, up to 300m detection; with White Light options
- Rugged, marine-grade finish as standard
- Tooled, soft silicone long-life wiper as standard



# X2 PRODUCT CODES



## X2 COMBAT RAL 7035 Light Grey No Illumination

RVX2S-G	30:1 4MP Zoom Ball PTZ, WIPER - Light Grey
RVX2S-POE-G	30:1 4MP Zoom Ball PTZ, WIPER. High-PoE (802.3bt) 60W - Light Grey
RVX2S-ALM-G	30:1 4MP Zoom Ball PTZ, 4 alarm inputs, 2 alarm outputs, WIPER - Light Grey



## X2 COMBAT RAL 9005 Black No Illumination

RVX2S-B	30:1 4MP Zoom Ball PTZ, WIPER - Black
RVX2S-POE-B	30:1 4MP Zoom Ball PTZ, WIPER. High-PoE (802.3bt) 60W - Black
RVX2S-ALM-B	30:1 4MP Zoom Ball PTZ, 4 alarm inputs, 2 alarm outputs, WIPER - Black



## X2 COMBAT RAL 7035 Light Grey IR Illumination

RVX2S-IR-G	30:1 4MP Zoom Ball PTZ, IR, WIPER - Light Grey
RVX2S-POE-IR-G	30:1 4MP Zoom Ball PTZ, IR, WIPER. High-PoE (802.3bt) 90W - Light Grey
RVX2S-ALM-IR-G	30:1 4MP Zoom Ball PTZ, 4 alarm inputs, 2 alarm outputs, IR, WIPER - Light Grey



## X2 COMBAT RAL 9005 Black IR Illumination

RVX2S-IR-B	30:1 4MP Zoom Ball PTZ, IR, WIPER - Black
RVX2S-POE-IR-B	30:1 4MP Zoom Ball PTZ, IR, WIPER. High-PoE (802.3bt) 90W - Black
RVX2S-ALM-IR-B	30:1 4MP Zoom Ball PTZ, 4 alarm inputs, 2 alarm outputs, IR, WIPER - Black



## X2 COMBAT RAL 7035 Light Grey Dual IR / White Light

RVX2S-IRWL-G	30:1 4MP Zoom Ball PTZ, IR/ White Light, WIPER - Light Grey
RVX2S-POE-IRWL-G	30:1 4MP Zoom Ball PTZ, IR/ White Light, WIPER. High-PoE (802.3bt) 90W - Light Grey
RVX2S-ALM-IRWL-G	30:1 4MP Zoom Ball PTZ, 4 alarm inputs, 2 alarm outputs, IR/ White Light, WIPER - Light Grey



## X2 COMBAT RAL 9005 Black Dual IR / White Light

RVX2S-IRWL-B	30:1 4MP Zoom Ball PTZ, IR/ White Light, WIPER - Black
RVX2S-POE-IRWL-B	30:1 4MP Zoom Ball PTZ, IR/ White Light, WIPER. High-PoE (802.3bt) 90W - Black
RVX2S-ALM-IRWL-B	30:1 4MP Zoom Ball PTZ, 4 alarm inputs, 2 alarm outputs, IR/ White Light, WIPER - Black

## X2 COMBAT Additional options to be specified with order

RVX2-SD	Factory fitted 128 GB on board SD - MUST BE ORDERED WITH CAMERA
RVX2-PC4	4mm Polycarbonate Ball Window Option
RVX2-3PC4	4mm Polycarbonate Ball Window and 3mm Polycarbonate Lamp Window option



## X2 COMBAT Power Supply

RVX2-PSU	24V DC PSU for X2/X3/X4 non alarm and alarm ball PTZ
----------	--



## X2 COMBAT PoE Injector

RV-POE-INJ-90W	90W Single Port Multi-Gig Power over Ethernet Midspan IEEE 802.3bt Compliant Power Injector
----------------	---



## X2 COMBAT Cable

RVX2-CABLE-5	X2/X3/X4 composite cable, compatible with non alarm ball PTZ - 5m
RVX2-CABLE-10	X2/X3/X4 composite cable, compatible with non alarm ball PTZ - 10m
RVX2-CABLE-20	X2/X3/X4 composite cable, compatible with non alarm ball PTZ - 20m



## X2 COMBAT Alarm Cable

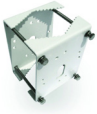
RVX2-CABLE-ALM-5	X2/X3/X4 composite cable, compatible with alarms ball PTZ - 5m
RVX2-CABLE-ALM-10	X2/X3/X4 composite cable, compatible with alarms ball PTZ - 10m



**X2 COMBAT Accessories - Visor**

RVX2-VISOR-G  
RVX2-VISOR-B

Sun & rain Visor (only applies when camera is mounted in upright position) - Light Grey  
Sun & rain Visor (only applies when camera is mounted in upright position) - Black



**X2 COMBAT Accessories - Pole**

RVX2-POLE-G  
RVX2-POLE-B

Pole mount adaptor 60-90mm for RVX2-WALL - Light Grey  
Pole mount adaptor 60-90mm for RVX2-WALL - Black



**X2 COMBAT Accessories - Corner**

RVX2-CNR-G  
RVX2-CNR-B

Corner Mount adapter for RVX2-WALL - Light Grey  
Corner Mount adapter for RVX2-WALL - Black



**X2 COMBAT Brackets - Wall**

RVX2-WALL-G  
RVX2-WALL-B

Wall mount bracket - Light Grey  
Wall mount bracket - Black



**X2 COMBAT Brackets - Swan**

RVX2-SWAN-G  
RVX2-SWAN-B

Swan mount bracket - Light Grey  
Swan mount bracket - Black



**X2 COMBAT Brackets - Standoff**

RVX2-STANDOFF-G  
RVX2-STANDOFF-B

120 mm Standoff mount bracket - Light Grey  
120 mm Standoff mount bracket - Black



**X2 COMBAT Special Paint Colours**

RVX4-PAINT-SPEC

Cost per dome & associated bracket for special colours – must specify RAL reference number





# X-SERIES HYBRID

“Our Dual Analogue & IP PTZ range of X Series Cameras”

---



# THE VERSATILE HYBRID...

---



## Our Dual Analogue & IP PTZ

Introducing the future-proof, UK Manufactured, rugged PTZ camera for analogue installations: Redvision's X-Series Hybrid. With the X-Series Hybrid, benefit a camera with dual IP and analogue connectivity, providing a future-proof solution ready for IP upgrade without changing camera hardware.

The X-Series Hybrid range includes the full suite of Redvision's industry leading X2 Combat, X3 Storm and X4 Commander PTZ cameras. Utilise the full feature set of these world class, rugged, reliable PTZ cameras; offering both full ONVIF compliance for IP connectivity, and analogue control utilising Pelco P / D telemetry.

## Typical Applications



Town Centres



Custodial



Legacy Infrastructure

## Key Features

- **UK Design and Manufacture**
- **Dual Analogue and IP Connectivity**
- **ONVIF Compliant**
- **Pelco P / D Telemetry**
- **X2 Combat, X3 Storm and X4 Commander available as Hybrid**

# X-SERIES PRODUCT HYBRID CODES



## X2 COMBAT HYBRID No Illumination

RVX2S-HYB-G 30:1 4MP Hybrid IP and Analogue Ball PTZ, WIPER - Light Grey  
 RVX2S-HYB-B 30:1 4MP Hybrid IP and Analogue Ball PTZ, WIPER - Black



## X2 COMBAT HYBRID IR Illumination

RVX2S-HYB-IR-G 30:1 4MP Hybrid IP and Analogue Ball PTZ, IR, WIPER - Light Grey  
 RVX2S-HYB-IR-B 30:1 4MP Hybrid IP and Analogue Ball PTZ, IR, WIPER - Black



## X2 COMBAT HYBRID Dual IR / White Light Illumination

RVX2S-HYB-IRWL-G 30:1 4MP Hybrid IP and Analogue Ball PTZ, IR/ White Light, WIPER - Light Grey  
 RVX2S-HYB-IRWL-B 30:1 4MP Hybrid IP and Analogue Ball PTZ, IR/ White Light, WIPER - Black



## X3 STORM HYBRID Electropolished Finish No Illumination

RVX3S-HYB 30:1 4MP Hybrid IP and Analogue, 316 Stainless Steel Zoom Ball PTZ, WIPER - Electropolished finish



## X3 STORM HYBRID Electropolished Finish IR Illumination

RVX3S-HYB-IR 30:1 4MP Hybrid IP and Analogue, 316 Stainless Steel Zoom Ball PTZ, IR, WIPER - Electropolished finish



## X3 STORM HYBRID Electropolished Finish Dual IR / White light Illumination

RVX3S-HYB-IRWL 30:1 4MP Hybrid IP and Analogue, 316 Stainless Steel Zoom Ball PTZ, IR and White Light, WIPER - Electropolished finish



## X4 COMMANDER HYBRID No Illumination

RVX4S-HYB-G 37:1 4MP Hybrid IP and Analogue Zoom Ball PTZ, WIPER - Light Grey  
 RVX4S-HYB-B 37:1 4MP Hybrid IP and Analogue Zoom Ball PTZ, WIPER - Black



## X4 COMMANDER HYBRID IR Illumination

RVX4S-HYB-IR-G 37:1 4MP Hybrid IP and Analogue Zoom Ball PTZ, IR, WIPER - Light Grey  
 RVX4S-HYB-IR-B 37:1 4MP Hybrid IP and Analogue Zoom Ball PTZ, IR, WIPER - Black



## X4 COMMANDER HYBRID IR EXTRA Illumination

RVX4S-HYB-IRX-G 37:1 4MP Hybrid IP and Analogue Zoom Ball PTZ, Extra Long-Range IR up to 500m, WIPER - Light Grey  
 RVX4S-HYB-IRX-B 37:1 4MP Hybrid IP and Analogue Zoom Ball PTZ, Extra Long-Range IR up to 500m, WIPER - Black



## X4 COMMANDER HYBRID Dual IR / White light Illumination

RVX4S-HYB-IRWL-G 37:1 4MP Hybrid IP and Analogue Zoom Ball PTZ, IR/ White Light, WIPER - Light Grey  
 RVX4S-HYB-IRWL-B 37:1 4MP Hybrid IP and Analogue Zoom Ball PTZ, IR/ White Light, WIPER - Black



**X-Series Hybrid Power Supply**

RV-HYB-PSU

24V DC PSU for X2/X3/X4 Hybrid ball PTZ



**X-Series Hybrid Cable**

RV-HYB-CABLE-5

X2/X3/X4 composite cable, compatible with non alarm ball PTZ - 5m

RV-HYB-CABLE-10

X2/X3/X4 composite cable, compatible with non alarm ball PTZ - 10m

RV-HYB-CABLE-20

X2/X3/X4 composite cable, compatible with non alarm ball PTZ - 20m





# VEGA

“A diverse array of rugged static housings and IP cameras”

---

# RUGGED, **STATIC,** VEGA!

---



## Our Rugged Static Option

The Redvision VEGA stands as a sturdy fixed camera housing, effectively safeguarding against dirt, moisture, and dust infiltration. Remarkably, the VEGA incorporates a specialized soft silicone wiper, enabling the removal of dirt and water from the lens, ensuring clear images even in challenging conditions.

With factory-installed camera options utilising leading-edge sensor technology, integrators are presented with a comprehensive solution for rugged static CCTV camera requirements.

## Typical Applications



Custodial



Power Stations



Ports

## Key Features

- **UK Design and Manufacture**
- Rugged, marine-grade finish as standard
- **Tooled, soft silicone long-life wiper**
- Cable management with built-in junction box
- **Factory fitted camera options**



# VEGA PRODUCT CODES



## VEGA 2010 WALL

- VEGA-2010-12-WALL Fully cable managed Camera Housing, including wall bracket and 12V DC heater. Ruggedised marine finish.
- VEGA-2010-24-WALL Fully cable managed Camera Housing, including wall bracket and 24V AC heater. Ruggedised marine finish.
- VEGA-2010PW-WALL Fully cable managed camera housing and wall bracket. POE, 12V DC, 24V AC. Trupark wiper and heater. Ruggedised marine finish.



## VEGA 2010 PED

- VEGA-2010-12-PED Fully cable managed Camera Housing, including pedestal bracket and 12V DC heater. Ruggedised marine finish.
- VEGA-2010-24-PED Fully cable managed Camera Housing, including pedestal bracket and 24V AC heater. Ruggedised marine finish.
- VEGA-2010PW-PED Fully cable managed camera housing and pedestal bracket. POE, 12V DC, 24V AC. Trupark wiper and heater. Ruggedised marine finish.



## VEGA 2052

- VEGA-2052-WALL Fully cable managed camera, including wall bracket; 12V DC/ POE, 2MP Sony Exmor lowlight sensor, 2.7-13.5mm motorised lens and autofocus. Ruggedised marine finish.
- VEGA-2052-PED Fully cable managed camera, including pedestal bracket; 12V DC/ POE, 2MP Sony Exmor lowlight sensor, 2.7-13.5mm motorised lens and autofocus. Ruggedised marine finish.



## VEGA 2065 WALL

- VEGA-2065-12-WALL Fully cable managed camera housing and wall bracket. 12V DC heater. Factory fitted 5MP, 1/2.8" CMOS ABF Box Camera, 3.8-18mm lens. Ruggedised marine finish.
- VEGA-2065-12-50-W Fully cable managed camera housing and wall bracket. 12V DC heater. Factory fitted 5MP, 1/2.8" CMOS ABF Box Camera, 12-50mm lens. Ruggedised marine finish.
- VEGA-2065-24-WALL Fully cable managed camera housing and wall bracket. 24V AC heater. Factory fitted 5MP, 1/2.8" CMOS ABF Box Camera, 3.8-18mm lens. Ruggedised marine finish.
- VEGA-2065-24-50-W Fully cable managed camera housing and wall bracket. 24V AC heater. Factory fitted 5MP, 1/2.8" CMOS ABF Box Camera, 12-50mm lens. Ruggedised marine finish.
- VEGA-2065PW-WALL Fully cable managed camera housing and wall bracket. POE, 12V DC, 24V AC. Factory fitted 5MP, 1/2.8" CMOS ABF Box Camera, 3.8-18mm lens. Trupark wiper and heater. Ruggedised marine finish.
- VEGA-2065PW-50-W Fully cable managed camera housing and wall bracket. POE, 12V DC, 24V AC. Factory fitted 5MP, 1/2.8" CMOS ABF Box Camera, 12-50mm lens. Trupark wiper and heater. Ruggedised marine finish.



## VEGA 2065 PED

- VEGA-2065-12-PED Fully cable managed camera housing and pedestal bracket. 12V DC heater. Factory fitted 5MP, 1/2.8" CMOS ABF Box Camera, 3.8-18mm lens. Ruggedised marine finish.
- VEGA-2065-12-50-P Fully cable managed camera housing and pedestal bracket. 12V DC heater. Factory fitted 5MP, 1/2.8" CMOS ABF Box Camera, 12-50mm lens. Ruggedised marine finish.
- VEGA-2065-24-PED Fully cable managed camera housing and pedestal bracket. 24V AC heater. Factory fitted 5MP, 1/2.8" CMOS ABF Box Camera, 3.8-18mm lens. Ruggedised marine finish.
- VEGA-2065-24-50-P Fully cable managed camera housing and pedestal bracket. 24V AC heater. Factory fitted 5MP, 1/2.8" CMOS ABF Box Camera, 12-50mm lens. Ruggedised marine finish.
- VEGA-2065PW-PED Fully cable managed camera housing and pedestal bracket. POE, 12V DC, 24V AC. Factory fitted 5MP, 1/2.8" CMOS ABF Box Camera, 3.8-18mm lens. Trupark wiper and heater. Ruggedised marine finish.
- VEGA-2065PW-50-P Fully cable managed camera housing and pedestal bracket. POE, 12V DC, 24V AC. Factory fitted 5MP, 1/2.8" CMOS ABF Box Camera, 12-50mm lens. Trupark wiper and heater. Ruggedised marine finish.

## VEGA Extra

- VEGA-WASH Washer nozzle kit - compatible with standard CCTV wash pumps
- VEGA-VISOR Extendable visor for VEGA Housing
- VEGA-CUSTOM-PAINT Custom paint – must specify RAL colour
- VEGA-PC4 4mm Polycarbonate Window Option

# INTRO: **VEGA** THERMAL

---



## VEGA + Thermal Imaging

Introducing a cutting-edge thermal camera, engineered for exceptional performance, enclosed in a rugged housing.

This advanced camera includes a 640x512 resolution and an uncooled VOx Microbolometer. It excels in delivering clear and highly detailed images, even when confronted with total darkness.

## Typical Applications



Perimeter



MOD



## **VEGA** THERMAL **PRODUCT** **CODES**

---

### **VEGA-THERMAL - 09/15/25/35/50-WALL**

Fully cable managed camera housing and wall bracket.  
POE+, 12V DC, 24 AC. Factory fitted 640 x 512 resolution, <40mK Thermal Box Camera,  
9/15/25/35/50mm fixed lens.  
Ruggedised marine finish.

### **VEGA-THERMAL - 09/15/25/35/50-PED**

Fully cable managed camera housing and wall bracket.  
POE+, 12V DC, 24 AC. Factory fitted 640 x 512 resolution, <40mK Thermal Box Camera,  
9/15/25/35/50mm fixed lens.  
Ruggedised marine finish.



# HUB

“Robust, innovative with 4G/5G compatibility”

---



# ONE CENTRAL CCTV HUB

---

## Our Rugged 4G/5G Camera Station

The Redvision Hub is designed for rapid installation, offering flexible CCTV surveillance in a wide variety of applications.

The Hub offers a central connection-point, to bring all your remote monitoring needs together in one tough, rugged, stylish enclosure.

Powered by 110~240VAC or 24VDC, with up to four cameras connected and controlled, flexibility is at the core of the Hub design.

## Typical Applications



Construction



Public Space



Utilities

## Key Features

- UK Design and Manufacture
- Rugged, marine-grade finish as standard
- Unlimited 4G/5G data and support
- Simple plug and play installation, ONVIF compliant
- Up to 4 Cameras per Station, directly mounted



# HUB PRODUCT CODES



## CCTV HUB - Mains Powered - 1 Channel

- RV-HUB-1-P Rugged Camera Station for 1 PoE Camera, 4G connectivity, 110-240VAC, Pole Mounted
- RV-HUB-1-W Rugged Camera Station for 1 PoE Camera, 4G connectivity, 110-240VAC, Wall Mounted



## CCTV HUB - Mains Powered - 2 Channels (max 1 PTZ)

- RV-HUB-2-1TB-P Rugged Camera Station for 2 PoE Cameras (maximum 1 PTZ), 1TB local recording, ONVIF, 4G connectivity, 110-240VAC, Pole Mounted
- RV-HUB-2-1TB-W Rugged Camera Station for 2 PoE Cameras (maximum 1 PTZ), 1TB local recording, ONVIF, 4G connectivity, 110-240VAC, Wall Mounted
- RV-HUB-2-4TB-P Rugged Camera Station for 2 PoE Cameras (maximum 1 PTZ), 4TB local recording, ONVIF, 4G connectivity, 110-240VAC, Pole Mounted
- RV-HUB-2-4TB-W Rugged Camera Station for 2 PoE Cameras (maximum 1 PTZ), 4TB local recording, ONVIF, 4G connectivity, 110-240VAC, Wall Mounted



## CCTV HUB - Mains Powered - 4 Channels (max 1 PTZ)

- RV-HUB-4-1TB-P Rugged Camera Station for 4 PoE Cameras (maximum 1 PTZ), 1TB local recording, ONVIF, 4G connectivity, 110-240VAC, Pole Mounted
- RV-HUB-4-1TB-W Rugged Camera Station for 4 PoE Cameras (maximum 1 PTZ), 1TB local recording, ONVIF, 4G connectivity, 110-240VAC, Wall Mounted
- RV-HUB-4-4TB-P Rugged Camera Station for 4 PoE Cameras (maximum 1 PTZ), 4TB local recording, ONVIF, 4G connectivity, 110-240VAC, Pole Mounted
- RV-HUB-4-4TB-W Rugged Camera Station for 4 PoE Cameras (maximum 1 PTZ), 4TB local recording, ONVIF, 4G connectivity, 110-240VAC, Wall Mounted



## CCTV HUB - 24VDC Powered - 1 Channel

- RV-24-HUB-1-P Rugged Camera Station for one 24VDC PTZ Camera, 4G connectivity, 24VDC, Pole Mounted
- RV-24-HUB-1-W Rugged Camera Station for one 24VDC PTZ Camera, 4G connectivity, 24VDC, Wall Mounted



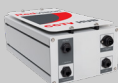
## CCTV HUB - 24VDC Powered - 2 Channels (max 1 PTZ)

- RV-24-HUB-2-1TB-P Rugged Camera Station for 1 PoE Camera and one 24VDC PTZ camera, 1TB local recording, ONVIF, 4G connectivity, 24VDC, Pole Mounted
- RV-24-HUB-2-1TB-W Rugged Camera Station for 1 PoE Camera and one 24VDC PTZ camera, 1TB local recording, ONVIF, 4G connectivity, 24VDC, Wall Mounted
- RV-24-HUB-2-4TB-P Rugged Camera Station for 1 PoE Camera and one 24VDC PTZ camera, 4TB local recording, ONVIF, 4G connectivity, 24VDC, Pole Mounted
- RV-24-HUB-2-4TB-W Rugged Camera Station for 1 PoE Camera and one 24VDC PTZ camera, 4TB local recording, ONVIF, 4G connectivity, 24VDC, Wall Mounted



## CCTV HUB - 24VDC Powered - 4 Channels (max 1 PTZ)

- RV-24-HUB-4-1TB-P Rugged Camera Station for 3 PoE Camera and one 24VDC PTZ camera, 1TB local recording, ONVIF, 4G connectivity, 24VDC, Pole Mounted
- RV-24-HUB-4-1TB-W Rugged Camera Station for 3 PoE Camera and one 24VDC PTZ camera, 1TB local recording, ONVIF, 4G connectivity, 24VDC, Wall Mounted
- RV-24-HUB-4-4TB-P Rugged Camera Station for 3 PoE Camera and one 24VDC PTZ camera, 4TB local recording, ONVIF, 4G connectivity, 24VDC, Pole Mounted
- RV-24-HUB-4-4TB-W Rugged Camera Station for 3 PoE Camera and one 24VDC PTZ camera, 4TB local recording, ONVIF, 4G connectivity, 24VDC, Wall Mounted



## 5G CCTV HUB - Mains Powered - 1 Channel

- RV-HUB5G-1-P Rugged Camera Station for 1 PoE Camera, 5G & LAN connectivity, 110-240VAC, Pole Mounted
- RV-HUB5G-1-W Rugged Camera Station for 1 PoE Camera, 5G & LAN connectivity, 110-240VAC, Wall Mounted



## 5G CCTV HUB - Mains Powered - 2 Channels (max 1 PTZ)

- RV-HUB5G-2-1TB-P Rugged Camera Station for 2 PoE Cameras (maximum 1 PTZ), 1TB local recording, ONVIF, 5G connectivity, 110-240VAC, Pole Mounted
- RV-HUB5G-2-1TB-W Rugged Camera Station for 2 PoE Cameras (maximum 1 PTZ), 1TB local recording, ONVIF, 5G connectivity, 110-240VAC, Wall Mounted
- RV-HUB5G-2-4TB-P Rugged Camera Station for 2 PoE Cameras (maximum 1 PTZ), 4TB local recording, ONVIF, 5G connectivity, 110-240VAC, Pole Mounted
- RV-HUB5G-2-4TB-W Rugged Camera Station for 2 PoE Cameras (maximum 1 PTZ), 4TB local recording, ONVIF, 5G connectivity, 110-240VAC, Wall Mounted



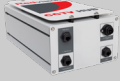
### 5G CCTV HUB - Mains Powered - 4 Channels (max 1 PTZ)

RV-HUB5G-4-1TB-P	Rugged Camera Station for 4 PoE Cameras (maximum 1 PTZ), 1TB local recording, ONVIF, 5G connectivity, 110-240VAC, Pole Mounted
RV-HUB5G-4-1TB-W	Rugged Camera Station for 4 PoE Cameras (maximum 1 PTZ), 1TB local recording, ONVIF, 5G connectivity, 110-240VAC, Wall Mounted
RV-HUB5G-4-4TB-P	Rugged Camera Station for 4 PoE Cameras (maximum 1 PTZ), 4TB local recording, ONVIF, 5G connectivity, 110-240VAC, Pole Mounted
RV-HUB5G-4-4TB-W	Rugged Camera Station for 4 PoE Cameras (maximum 1 PTZ), 4TB local recording, ONVIF, 5G connectivity, 110-240VAC, Wall Mounted



### CCTV HUB - 24VDC Powered - 1 Channel

RV-24-HUB5G-1-P	Rugged Camera Station for one 24VDC PTZ Camera, 5G connectivity, 24VDC, Pole Mounted
RV-24-HUB5G-1-W	Rugged Camera Station for one 24VDC PTZ Camera, 5G connectivity, 24VDC, Wall Mounted



### CCTV HUB - 24VDC Powered - 2 Channels (max 1 PTZ)

RV-24-HUB5G-2-1TB-P	Rugged Camera Station for 1 PoE Camera and one 24VDC PTZ camera, 1TB local recording, ONVIF, 5G connectivity, 24VDC, Pole Mounted
RV-24-HUB5G-2-1TB-W	Rugged Camera Station for 1 PoE Camera and one 24VDC PTZ camera, 1TB local recording, ONVIF, 5G connectivity, 24VDC, Wall Mounted
RV-24-HUB5G-2-4TB-P	Rugged Camera Station for 1 PoE Camera and one 24VDC PTZ camera, 4TB local recording, ONVIF, 5G connectivity, 24VDC, Pole Mounted
RV-24-HUB5G-2-4TB-W	Rugged Camera Station for 1 PoE Camera and one 24VDC PTZ camera, 4TB local recording, ONVIF, 5G connectivity, 24VDC, Wall Mounted



### CCTV HUB - 24VDC Powered - 4 Channels (max 1 PTZ)

RV-24-HUB5G-4-1TB-P	Rugged Camera Station for 3 PoE Camera and one 24VDC PTZ camera, 1TB local recording, ONVIF, 5G connectivity, 24VDC, Pole Mounted
RV-24-HUB5G-4-1TB-W	Rugged Camera Station for 3 PoE Camera and one 24VDC PTZ camera, 1TB local recording, ONVIF, 5G connectivity, 24VDC, Wall Mounted
RV-24-HUB5G-4-4TB-P	Rugged Camera Station for 3 PoE Camera and one 24VDC PTZ camera, 4TB local recording, ONVIF, 5G connectivity, 24VDC, Pole Mounted
RV-24-HUB5G-4-4TB-W	Rugged Camera Station for 3 PoE Camera and one 24VDC PTZ camera, 4TB local recording, ONVIF, 5G connectivity, 24VDC, Wall Mounted



### CCTV HUB - Data

RV-HUB-DYN-UNL	3 Mobile Dynamic Public IP Unlimited Data SIM (Subject to Network Operator's Terms & Conditions) with Redvision Engineer Remote Configuration and Support - Price per Month
RV-HUB-FIXED-UNL	3 Mobile Fixed Public IP Unlimited Data SIM (Subject to Network Operator's Terms & Conditions) with Redvision Engineer Remote Configuration and Support - Price per Month
RV-HUB-THRD-PTY	Redvision Factory Fitting of Third Party Supplied Sim Card



### CCTV HUB - Software Viewing Options

RedVu CMS	Server/Client Based, Support Centralised and Distributed Video Management
VMS1000	Open Platform Video Management System, Powered by Digifort



### CCTV HUB - Mains Cable

RV-HUB-CABLE-5	5m External Rated Three Core Flying Mains Power Lead for CCTV Hub
RV-HUB-CABLE-10	10m External Rated Three Core Flying Mains Power Lead for CCTV Hub
RV-HUB-CABLE-20	20m External Rated Three Core Flying Mains Power Lead for CCTV Hub



### CCTV HUB - 24VDC Cable

RV-24-HUB-CABLE-5	5m External Rated 24VDC Power Lead for CCTV Hub
RV-24-HUB-CABLE-10	10m External Rated 24VDC Power Lead for CCTV Hub
RV-24-HUB-CABLE-20	20m External Rated 24VDC Power Lead for CCTV Hub

### CCTV HUB - Brackets and Accessories

RV-HUB-WALL-G	Hub Mounted X-series PTZ Bracket - Wall
RV-HUB-ADPT-G	Hub Mounted Adaptor Plate for Knight Series Cameras
RVX2-CABLE-HUB	X2/X3/X4 composite cable with Hub attachment, compatible with non alarm ball PTZ - 500mm
RVX2-CABLE-HUB-10	X2/X3/X4 composite cable with Hub attachment, compatible with non alarm ball PTZ -10m
RVX2-CABLE-HUB-20	X2/X3/X4 composite cable with Hub attachment, compatible with non alarm ball PTZ - 20m

### CCTV HUB - Custom

RV-HUB-CUSTOM	Custom Requirements Available on Request
---------------	--



# VMS 1000

POWERED BY  digifort

“Our Flagship open-platform control system for Redvision cameras and recorders.”

# WORLD LEADING PLATFORM

---

## An Open-Platform Video Management System

The Redvision VMS1000, powered by market-leading Digifort software, is a server-based, video management software and analytics system for effective digital surveillance, automation and access control.

VMS1000 stands as the world-leading open-platform video management and analytics solution, offering seamless integration with a vast array of over 400 camera manufacturer brands, comprising a staggering selection of more than 10,000 products.

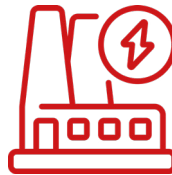
## Typical Applications



Custodial



Highways



Power Stations

## Key Features

- Powered by market-leading Digifort
- Open-platform: deep integration with over 10,000 cameras
- Ongoing support with no recurring VMS license fees
- Scalable, enterprise solution with vast fail-over options
- Third part integrations including Cortech Datalog MV

Redvision™  
VMS1000



# KNIGHT SERIES

“ONVIF compliant CCTV products enhancing VEGA, HUB and RedCop Systems”

---

# DAY OR KNIGHT...

---



## Quality Static IP Cameras and NVRs

The Knight Series range of static cameras utilises leading-edge sensor technology, boasting a Super WDR low-light CMOS sensor for high-quality images in daytime or night-time settings; with integral IR illumination to provide superb images even at zero lux.

Knight-Stor NVRs offer stunning recorded images, coupled with ease of use, feature-rich user interface and a sturdy but sleek design that would fit into any environment.

## Typical Applications



Retail



Hospitals



Schools

## Key Features

- Super low-light CMOS Sensor
- Plug-and-play PoE
- Integral Smart Infra-Red
- ONVIF Profile S, G & T Compliant
- Central monitoring with the RedVu CMS and App



# KNIGHT PRODUCT CODES



## KNIGHT-SERIES HD IP Cameras

RVK-W20-IR KNIGHT WATCH 1/2.8" CMOS, 2MP Bullet Camera, 2.7~13.5mm motorized lens, 60m IR, IK10



## KNIGHT-SERIES HD IP Cameras

RVK-E10-IR KNIGHT EYE 1/2.8" CMOS, 2MP Eyeball Dome Camera, 2.7~13.5mm motorized lens, 40m IR



## KNIGHT-SERIES HD IP Cameras

RVK-V50 KNIGHT VIEW 5MP, 1/2.8" CMOS Sensor ABF Box Camera  
RVK-V10-LENS-18 Manual Focus/ Auto Iris, 3.8mm ~ 18mm manual varifocal lens for Knight View box camera  
RVK-V10-LENS-50 Manual Focus/ Auto Iris, 12mm ~ 50mm manual varifocal lens for Knight View box camera



## KNIGHT-SERIES - KNIGHT EYE 40

RVK-E40-IR KNIGHT EYE 40 1/1.8" CMOS, 4MP Eyeball Dome Camera, 3.6~11mm motorized lens, 50m IR  
RVK-E40-IRWL KNIGHT EYE 40 1/1.8" CMOS, 4MP Eyeball Dome Camera, 4mm fixed lens, 40m IR, 30m White Light



## KNIGHT-SERIES - KNIGHT SIGHT 40

RVK-ST40-IR KNIGHT SIGHT 40 1/2.8" CMOS, 4MP Vandal Resistant Dome Camera, 2.7~13.5mm Motorised Lens, IK10, 40m IR



## KNIGHT-SERIES - KNIGHT WATCH 40

RVK-W40-IR KNIGHT WATCH 40 1/1.8" CMOS, 4MP Bullet Camera, 3.6~11mm motorized lens, 60m IR  
RVK-W40-IRWL KNIGHT WATCH 40 1/1.8" CMOS, 4MP Bullet Camera, 4mm fixed lens, 50m IR, 40m White Light



## KNIGHT-SERIES - KNIGHT SCAN 40

RVK-SN40-IR KNIGHT SCAN 40 1/2.8" CMOS, 4MP Minidome Camera, 2.8mm Fixed Lens, IK10, 15m IR



## KNIGHT-SERIES Brackets and Accessories

RVK-POLE1 Pole Clamp for Knight Series Cameras



## KNIGHT-SERIES Brackets and Accessories

RVK-EW-JB Junction Box for Knight Eye and Knight Watch Cameras



## KNIGHT-SERIES Brackets and Accessories

RVK-ST-JB Junction Box for Knight Sight Cameras



## KNIGHT-SERIES Brackets and Accessories

RVK-SN-JB Junction Box for Knight Scan Cameras





**KNIGHT-SERIES Brackets and Accessories**

RVK-WALL Wall Bracket for Knight Series Cameras - Requires Bracket Mount Adapter



**KNIGHT-SERIES Brackets and Accessories**

RVK-STANDOFF Standoff Bracket for Knight Series Cameras - Requires Bracket Mount Adapter



**KNIGHT-SERIES Brackets and Accessories**

RVK-ST-ADPT Knight Sight Bracket Mount Adapter - Compatible with RVK-WALL & RVK-STANDOFF



**KNIGHT-SERIES Brackets and Accessories**

RVK-SN-ADPT Knight Scan Bracket Mount Adapter - Compatible with RVK-WALL & RVK-STANDOFF



**KNIGHT-SERIES Brackets and Accessories**

RVK-E-ADPT Knight Eye Bracket Mount Adapter - Compatible with RVK-WALL & RVK-STANDOFF



**KNIGHT-SERIES HD IP Network Video Recorders**

- RVK-STOR-08-0TB KNIGHT STOR, 8 Channel NVR, 8 PoE Ports - No Hard Disk Drive
- RVK-STOR-08-1TB KNIGHT STOR, 8 Channel NVR, 8 PoE Ports - 1TB Hard Disk Drive
- RVK-STOR-08-4TB KNIGHT STOR, 8 Channel NVR, 8 PoE Ports - 4TB Hard Disk Drive
- RVK-STOR-08-6TB KNIGHT STOR, 8 Channel NVR, 8 PoE Ports - 6TB Hard Disk Drive
- RVK-STOR-08-8TB KNIGHT STOR, 8 Channel NVR, 8 PoE Ports - 8TB Hard Disk Drive
- RVK-STOR-08-12TB KNIGHT STOR, 8 Channel NVR, 8 PoE Ports - 12TB Hard Disk Drive



**KNIGHT-SERIES HD IP Network Video Recorders**

- RVK-STOR-32-0TB KNIGHT STOR, 32 Channel NVR, 16 PoE Ports - No Hard Disk Drive
- RVK-STOR-32-8TB KNIGHT STOR, 32 Channel NVR, 16 PoE Ports - 2 x 4TB Hard Disk Drive
- RVK-STOR-32-16TB KNIGHT STOR, 32 Channel NVR, 16 PoE Ports - 4 x 4TB Hard Disk Drive
- RVK-STOR-32-24TB KNIGHT STOR, 32 Channel NVR, 16 PoE Ports - 2 x 12TB Hard Disk Drive
- RVK-STOR-32-48TB KNIGHT STOR, 32 Channel NVR, 16 PoE Ports - 4 x 12TB Hard Disk Drive





# REDCOP

“Your rugged temporary deployment solution”

# RAPID, REMOTE, REDCOP



Remote, Re-deployable, Rugged.

Introducing Redcop, an exceptionally robust, trailer-mounted CCTV security system made in the UK, purpose-built for swift deployment to remote and vulnerable locations. This cutting-edge system is delivered directly to the site and can be effortlessly set up by trained engineers in no time.

When paired with a reliable 24/7 monitoring service, Redcop ensures continuous site surveillance, offering unwavering protection from the instant of installation. With this comprehensive CCTV security solution in place, operators can respond promptly to any on-site incidents as they unfold, enabling heightened security and peace of mind.

## Typical Applications



Construction



Highways



Void Property

## Key Features

- UK Design and Manufacture
- Rugged 6m tower for extended range and view
- Full HD video for high quality CCTV
- Lithium Ion battery, solar and hydrogen power options
- Analytics or PIR detection systems fully integrated



# CONTACT

---



**Redvision CCTV Limited**  
Alpha House  
Blacknest Road  
Blacknest  
Alton, Hants  
GU34 4PX



+44 (0) 1420 448448



[sales@redvisioncctv.com](mailto:sales@redvisioncctv.com)



[www.redvisioncctv.com](http://www.redvisioncctv.com)



**Redvision CCTV Limited**



@redvisioncctv\_uk



@RedVisionCCTV



@redvisioncctv6022

