






**Knight Eye 10  
Install Guide**

## Precautions

Please read this document before installing the device and strictly observe the guidance when using the device. When installing this device in a public space follow Information Commissioner's Office (ICO) guidance regarding CCTV signage. Failure to correctly use electrical products may cause fire and severe injuries.

 <b>WARNING</b>	It alerts you to moderate dangers which, if not avoided, may cause minor or moderate injuries.
 <b>CAUTION</b>	It alerts you to risks. Neglect of these risks may cause device damage, data loss, device performance deterioration, or unpredictable results.
 <b>NOTE</b>	It provides additional information.

### **WARNING**

- Strictly observe installation requirements when installing the device. The manufacturer shall not be held responsible for damage caused by users non-conformance to those requirements.
- Strictly conform to local electrical safety standards and use power adaptors that are marked with the LPS standard when installing and using this device. Otherwise, this device may be damaged.
- Use accessories delivered with this device. The voltage must meet input voltage requirements for this device.
- If this device is installed in place with unsteady voltage, ground this device to discharge high energy such as electrical surges to prevent the power supply from burning out.
- When this device is in use, ensure that no water or liquid flows into the device. If it does, immediately power off the device and disconnect all cables (such as power cables and network cables).

- Do not focus strong light (such as light bulbs or sunlight) on this device. Otherwise, the service life of the image sensor may be shortened.
- If this device is installed in places where thunder and lightning frequently occur, ground the device nearby to discharge high energy such as lightning strikes to prevent device damage.



- Avoid heavy loads, intensive vibration, and soaking to prevent damage during transportation and storage. The warranty does not cover any device damage that is caused during secondary packaging and transportation after the original packaging is taken apart.
- Fix the device securely out of reach of mechanical damage and keep the device away from magnetic field interference. Do not install the device on moving surfaces or in locations subject to shock waves.
- Clean the device with a soft dry cloth. For stubborn dirt, dip the cloth into diluted neutral cleanser, gently wipe the dirt with the cloth, and then dry the device.
- Do not jam the ventilation opening. Follow the installation instructions provided in this document when installing the device.
- Keep the device away from heat sources such as radiators, electric heaters, or other heated equipment.
- Keep the device away from moist, dusty, extremely hot, or cold places, and away from strong electro-magnetic radiation.
- If the device is installed outdoors, take insect and moisture proof measures to avoid circuit board corrosion that can adversely affect camera performance.
- Remove the power plug if the device is not used for a long period of time.
- Before unpacking, check whether the fragile sticker is damaged. If the fragile sticker is damaged, contact customer services. The manufacturer shall not be held responsible for any third-party damage to the fragile sticker.

## Special Announcement

- All complete products sold by the manufacturer are closely inspected and delivered with product labelling, quick setup guide and accessories. The manufacturer shall not be held responsible for counterfeiting of its products.
- The manufacturer will update this manual according to product function enhancement or changes and will regularly update the software and hardware described in this manual. Updated information will be added to new versions of this manual without prior notice.
- This manual may contain misprints, technical information that is not sufficiently accurate, or product function and operation description that is slightly inconsistent with the actual product, with the final interpretation determined by the manufacturer as standard.
- This manual is only for reference and does not ensure that the information is totally consistent with the actual product. If there is a variance, refer to the actual product for consistency.

### NOTE

For more information, please refer to website.

## 1 Open Package Examination

Open the package, check the appearance of the product for no obvious damage, and confirm the item list as demonstrated in table 1-1 is present.

Table 1-1 Packing List

Component	Quantity
Knight Eye 10 IP Eyeball Camera	1
Install Guide	1
Green Wall Plugs S8*30mm	4
White self-tapping screw PA4.0*35mm	4
Focusing wrench	1
Network access port protective cover	1
Waterproof rubber seal	1
Video patch cord	1

## 2 Device Structure

### 2.1 Device Ports



NOTE

Different devices may have different ports and multi-head cable, please refer to the actual product.

Figure 2-1 Hardware ports

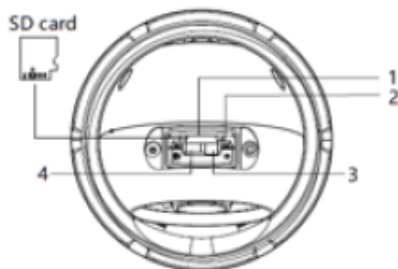


Table 2-1 Hardware Ports Description


ID	Port Name	Description
1	SD Card slot	<p data-bbox="426 138 678 167">Install an SD card.</p> <p data-bbox="426 171 543 200"> NOTE</p> <ul data-bbox="486 211 937 422" style="list-style-type: none"><li data-bbox="486 211 937 422">• Before installing an SD card, verify that the card is not in write protection state. Otherwise, the data may be lost, or the SD card may be damaged.</li></ul>
2	SD Card and indicator	<p data-bbox="426 432 927 490">Indicate the card status, the status is described as follows:</p> <ul data-bbox="486 495 916 567" style="list-style-type: none"><li data-bbox="486 495 916 531">• Off: No card is inserted</li><li data-bbox="486 531 916 567">• On: An SD card is inserted</li></ul>
3	BNC Video	<p data-bbox="426 578 937 709">Sends an analogue video signal. You can connect the camera to a TV monitor through this port to view the analogue video.</p>
4	Reset button	<p data-bbox="426 723 927 816">Restores the camera to the factory settings by pressing and holding this button for more than five seconds.</p>

Figure 2-2 Multi-Head Cable

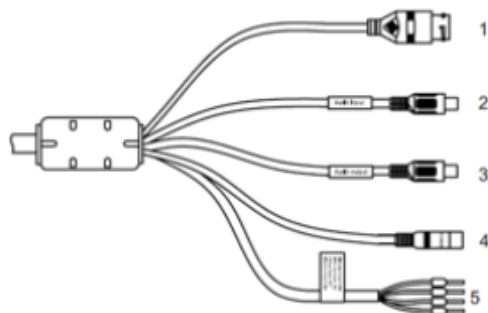


Table 2-2 Multi-Head Description

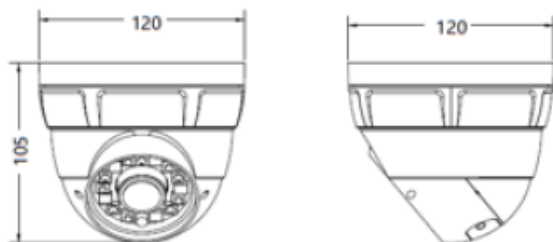
ID	Core	Description	Remark
1	Network access port	Connects to a standard Ethernet cable.	
2	Audio input port	Receives an analogue audio signal from devices such as sound pickup device.	Applies for camera with audio function.
3	Audio output port	Connects to external audio device such as a speaker.	Applies for camera with audio function.
4	Power supply (DC 12V)	Connects to a 12V (-15% - +10%) direct current (DC) power supply.	
5	Grey Core Purple Core Yellow Core Orange Core	Alarm output terminal A (normally open) Alarm output terminal B (normally open) Alarm input positive terminal Alarm input ground terminal	Applied for alarm function

## 2.2 Camera Dimensions

### NOTE

Different devices may have different dimensions, please refer to the actual product.

Figure 2-3 Dimensions (Unit:mm)



## 3 Device Installation

### Installation Steps:

Step 1. Open the package, take out the camera, unscrew the camera compression ring, and disassemble the camera.

Step 2. Positioning the mounting base, drill holes on the ceiling or wall and drive wall plugs into the holes.

The dimensions of the mounting base, as shown in figure 3-1.

Step 3. Fix the camera mounting base to the ceiling (or wall) by use of self-tapping screws.

Step 4. Connect the multi-connector cable.

### NOTE

You can route cables from the top or from aside. If you use the top routing method, drill a hole in the installation surface first. If you use the aside routing method, please cut the compression ring outlet, as shown in figure 3-2, and route the multi-head cable out from the side gap at the bottom of the camera.



Figure 3-1 Dimensions of Mounting Base

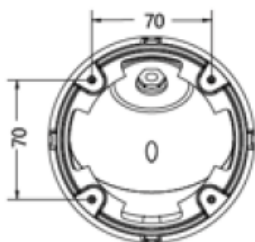
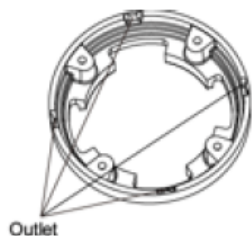
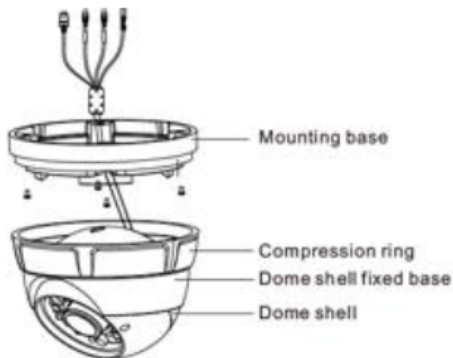


Figure 3-2 the Compression Ring Outlet



Step 5. Install the dome shell, the dome shell fixed base and the compression ring on the mounting base, as shown in figure 3-3.

Figure 3-3 Camera Installation

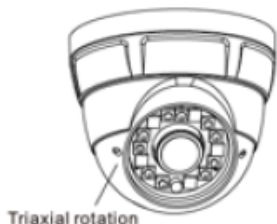


Step 6. Turn the main body, adjust the position so that the camera faces the monitored area, then tighten the compression ring and fix the camera, as shown in figure 3-4.

 NOTE

Adjust the position of the camera by triaxial rotation: rotating horizontally, rotating up and down, and performing lens axial rotation, and adjust the camera direction and lens alignment target as required.

Figure 3-4 Adjusting the camera



### 4.1 Login

Step 1. Open Internet Explorer, enter the IP address of the IP camera (default value: 192.168.0.120) in the address box, and press Enter. The login page is displayed. As shown in figure 4-1.

Step 2. Input the username and password.

#### NOTE

The default username is admin. The default password is admin. Change the password when you log in to the system for the first time to ensure system security.

You can change the system display language on the login page.

**Figure 4-1 Login**



The screenshot shows the Redvision login interface. At the top left is the Redvision logo, which consists of a stylized red and grey shape followed by the text "Redvision™". To the right of the logo is a language dropdown menu currently set to "English". Below the logo and language menu are two input fields: "User Name" and "Password". To the right of these fields is a grey button with a red arrow pointing to the right, which is the login button.

Step 3. Click login, the main page is displayed.

## 4.2 Modify the IP address

Choose Configuration > Device > Local Network, The Local Network page is displayed.

Enter the IP address in the IP address box and click Apply as shown in figure 4-2.

Once a new IP address has been applied, please use this to log in to the web interface.

Figure 4-2 Local Network

**Local Network**

IP Protocol: IPv4

DHCP: off

IP Address: 192.168.240.107

Subnet Mask: 255.255.255.0

Default Gateway: 192.168.240.1

Preferred DNS Server: 192.168.0.1

Alternate DNS Server: 192.168.0.2

MTU(800-1500): 1500

Refresh Apply

## 4.3 Browsing Video

To ensure the real-time video can be played properly, you must perform the following operation when you log in to the web for the first time:

Step 1. In Internet Explorer, select Tools > Internet options > Security > Trusted sites > Sites, in the display dialog box, click Add, as shown in figure 4-3.

Step 2. In Internet Explorer, select Tools > Internet Options > Security > Custom level, and set "Download unsigned ActiveX controls" to Enable, as shown in figure 4-4.

Figure 4-3 Adding a Trusted Site

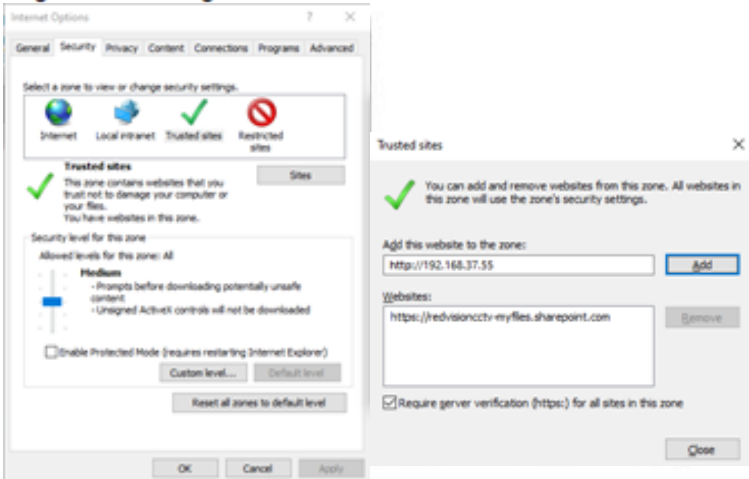
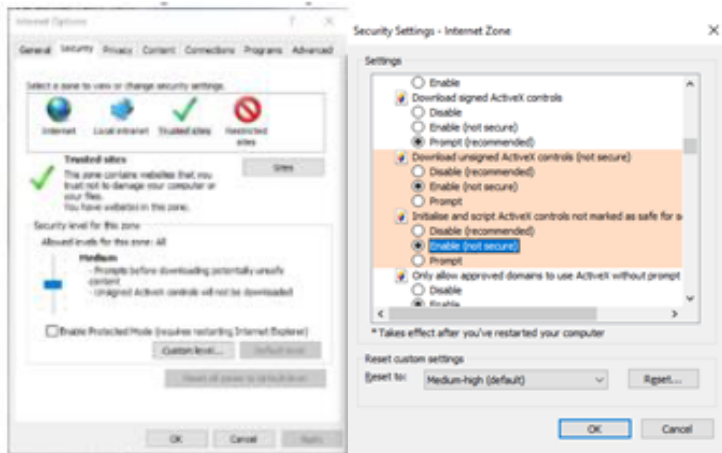


Figure 4-4 Configuring ActiveX Control and Plug-in



Step 3. Download and install the player control as prompted.

 NOTE

If repair tips is displayed when installing the control, please ignore the prompt, and continue the installation, the login page is displayed when the control is loaded.

To browse real-time video, click Live Video. The Live Video page is displayed, as show in figure 4-5

Figure 4-5 Live Video



## 4.4 Two-way audio

### 4.4.1 Camera > PC

Connection:

Step 1. Connect microphone to audio input interface of the camera.

Step 2. Connect speaker to the PC audio output interface.

Step 3. Log in camera Web, click  to turn on two-way audio.

### 4.4.2 PC > Camera

Step 1. Connect microphone to PC audio input interface.

Step 2. Connect speaker to camera audio output interface.

Step 3. Log in camera Web, click  to turn on two-way audio.

