






Knight Watch 10

Install Guide

Precautions

Please read this document before installing the device and strictly observe the guidance when using the device. When installing this device in a public space follow Information Commissioner's Office (ICO) guidance regarding CCTV signage. Failure to correctly use electrical products may cause fire and severe injuries.

| | |
|--|--|
|  WARNING | It alerts you to moderate dangers which, if not avoided, may cause minor or moderate injuries. |
|  CAUTION | It alerts you to risks. Neglect of these risks may cause device damage, data loss, device performance deterioration, or unpredictable results. |
|  NOTE | It provides additional information. |

WARNING

- Strictly observe installation requirements when installing the device. The manufacturer shall not be held responsible for damage caused by users non-conformance to those requirements.
- Strictly conform to local electrical safety standards and use power adaptors that are marked with the LPS standard when installing and using this device. Otherwise, this device may be damaged.
- Use accessories delivered with this device. The voltage must meet input voltage requirements for this device.
- If this device is installed in place with unsteady voltage, ground this device to discharge high energy such as electrical surges to prevent the power supply from burning out.
- When this device is in use, ensure that no water or liquid flows into the device. If it does, immediately power off the device and disconnect all cables (such as power cables and network cables).

- Do not focus strong light (such as light bulbs or sunlight) on this device. Otherwise, the service life of the image sensor may be shortened.
- If this device is installed in places where thunder and lightning frequently occur, ground the device nearby to discharge high energy such as lightning strikes to prevent device damage.



- Avoid heavy loads, intensive vibration, and soaking to prevent damage during transportation and storage. The warranty does not cover any device damage that is caused during secondary packaging and transportation after the original packaging is taken apart.
- Fix the device securely out of reach of mechanical damage and keep the device away from magnetic field interference. Do not install the device on moving surfaces or in locations subject to shock waves.
- Clean the device with a soft dry cloth. For stubborn dirt, dip the cloth into diluted neutral cleanser, gently wipe the dirt with the cloth, and then dry the device.
- Do not jam the ventilation opening. Follow the installation instructions provided in this document when installing the device.
- Keep the device away from heat sources such as radiators, electric heaters, or other heated equipment.
- Keep the device away from moist, dusty, extremely hot, or cold places, and away from strong electro-magnetic radiation.
- If the device is installed outdoors, take insect and moisture proof measures to avoid circuit board corrosion that can adversely affect camera performance.
- Remove the power plug if the device is not used for a long period of time.
- Before unpacking, check whether the fragile sticker is damaged. If the fragile sticker is damaged, contact customer services. The manufacturer shall not be held responsible for any third-party damage to the fragile sticker.

Special Announcement

- All complete products sold by the manufacturer are closely inspected and delivered with product labelling, quick setup guide and accessories. The manufacturer shall not be held responsible for counterfeiting of its products.
- The manufacturer will update this manual according to product function enhancement or changes and will regularly update the software and hardware described in this manual. Updated information will be added to new versions of this manual without prior notice.
- This manual may contain misprints, technical information that is not sufficiently accurate, or product function and operation description that is slightly inconsistent with the actual product, with the final interpretation determined by the manufacturer as standard.
- This manual is only for reference and does not ensure that the information is totally consistent with the actual product. If there is a variance, refer to the actual product for consistency.

NOTE

For more information, please refer to website.

1 Open Package Examination

Open the package, check the appearance of the product for no obvious damage, and confirm the item list as demonstrated in table 1-1 is present.

Table 1-1 Packing List

| Component | Quantity |
|----------------------------------|----------|
| Knight Watch 10 IP bullet Camera | 1 |
| Install Guide | 1 |
| Accessories Package | 1 |

2 Device Ports

NOTE

Different devices may have a different multi-head cable, please refer to the actual product.

Figure 2-1 Multi-Head Cable



2-1 Multi-Head Cable Description

| ID | Core | Description | Remark |
|----|---------------------|---|--------|
| 1 | Network access port | Connects to a standard Ethernet cable. | |
| 2 | Power supply | Connects to a 12V (-15%~+10%) direct current (DC) power supply. | |

3 Quick Configuration(e.g IE)

3-1 Login

Step 1. Open Internet Explorer, enter the IP address of the IP camera (default value: 192.168.0.120) in the address box, and press Enter. The login page is displayed. As shown in figure 3-1.

Step 2. Input the username and password.

NOTE

- The default username is admin. The default password is admin. Change the password when you log in to the system for the first time to ensure security.
- You can change the system display language on the login page.

Figure 3-1 Login



The image shows the Redvision login interface. At the top left is the Redvision logo, which consists of a stylized red and grey shape followed by the text "Redvision™". To the right of the logo is a language dropdown menu currently set to "English". Below the logo and language menu are two input fields: "User Name" and "Password". To the right of these fields is a grey button with a red arrow pointing to the right, which is the login button.

Step 3. Click Login, the main page is displayed.

3.2 Modify IP address

Choose configuration > Device > Local network the Local Network page is displayed.

Enter the new IP address in the IP address box and click apply. As shown in figure 3-2.

Once a new IP address has been applied, please use this to log in to the web interface.

Figure 3-2 Local Network

The screenshot shows a web interface for configuring a local network. The title is "Local Network". Below the title is a horizontal line. The configuration is organized into several sections:

- IP Protocol:** A dropdown menu currently set to "IPv4".
- DHCP:** A toggle switch currently set to "OFF".
- IP Address:** A text input field containing "192.168.0.120".
- Subnet Mask:** A text input field containing "255.255.255.0".
- Default Gateway:** A text input field containing "192.168.241.1".
- Preferred DNS Server:** A text input field containing "192.168.0.1".
- Alternate DNS Server:** A text input field containing "192.168.0.2".
- MTU(800-1500):** A text input field containing "1500".

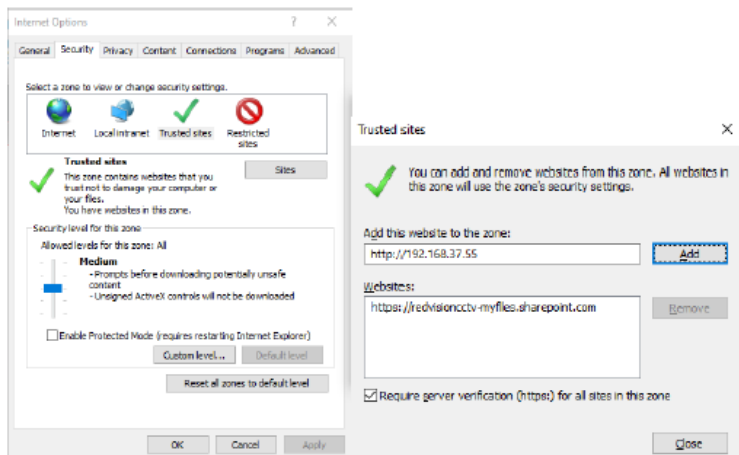
At the bottom right of the form, there are two buttons: "Refresh" and "Apply".

3.3 Browsing video

To ensure the real-time video can be played properly, you must perform the following operation when you log in to the web page for the first time:

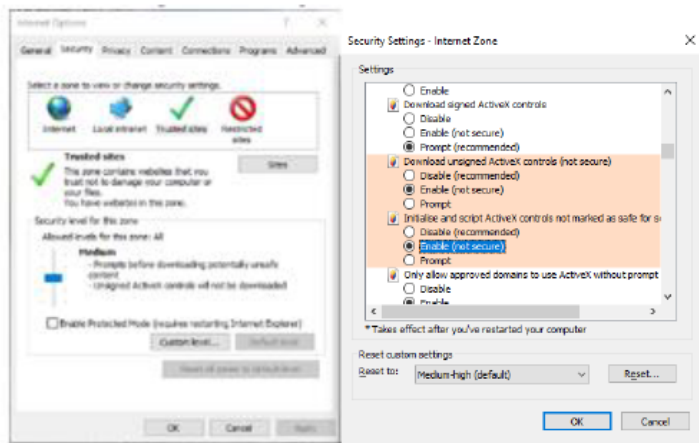
Step 1. In Internet Explorer, select Tools > Internet options > Security > Trusted sites > Sites, in the display dialog box, click Add, as shown in figure 3-3.

Figure 3-3 Adding a Trusted Site



Step 2. In Internet Explorer, select Tools > Internet Options > Security > Custom level, and set “Download unsigned ActiveX controls” to Enable, as shown in figure 3-4.

Figure 3-4 Configuring ActiveX Control and Plug-in



Step 3. Download and install the player control as prompted.

NOTE







If repair tips is displayed when installing the control, please ignore the prompt, and continue the installation, the login page is displayed when the control is loaded.

To browse a real-time video, click Live video. The Live Video page is displayed, as shown in Figure 3-5.

Figure 3-5 Live Video



Description:

1. Click  to change the password. Please change the password when you log in to the system for the first time to ensure system security.
2. Click  to return to the log in page.
3. Click  to stop playing the video; click  to play a video.
4. To set sensor parameters, click  to open the sensor setting page. On the sensor setting page, you can set time segment, image, scene, exposure, WB, day night, noise reduction, enhance image.
5. Click , snapshot the video and save to local disk automatically.
6. Double click in the video area to enter the full-screen mode, and double click again to exit.

To browse device information, choose “configuration”, the “Device Info” page is displayed, as shown in figure 3-6.

Figure 3-6 Device Info

| | |
|-----------------------|-----------------------------|
| Device ID | 004A68 |
| Device Name | 818-410-18 ✓ |
| MAC Address | BC:34:00:00:4A:68 |
| Camera Type | IPCAMERA |
| Product Model | RVK-W10-IR |
| Manufacturer Name | Redvision |
| Hardware Version | V090041_1 |
| Firmware Version | v3.5.0812.1004.161.0.33.3.1 |
| Channel Quantity | 1 |
| Alarm Input Quantity | 0 |
| Alarm Output Quantity | 0 |
| Serial Port Quantity | 0 |
| Network Card Quantity | 1 |
| Network Card Quantity | 1 |

[Refresh](#)

Choose “Configuration > Stream > Base stream” the “Stream” page is displayed, as shown in figure 3-7.

Figure 3-7 Stream

Stream

Stream ID: 1

Name: stream1

Video Encode Type: H265

Video Encode Level: Mid

Audio Encode Type: G711_ALAW

Resolution: 1920x1080

Frame Rate(fps): 25

I Frame Interval(Unit: Frame): 50

Bit Rate Type: CBR

Bit Rate(kbps)(500-12000): 4096

Smart Encode: OFF

Refresh Apply

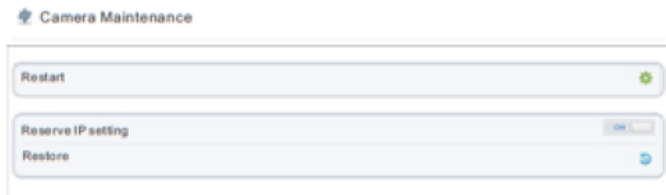
Refresh Apply


Set the parameters according to the page and click “apply”.


- If the message “Apply success!” is displayed, click confirm. The system saves the settings.
- If the message “Apply Failed!” is displayed, you must apply for the Parameter Configure permission from an administrator.
- If a message indicating that the “bit rate invalid” is displayed, enter a new bit rate value.

Choose “Configuration > Maintenance”, the “Camera Maintenance” is displayed, as shown in figure 3-8. You can restart and restore the camera in this page.


Figure 3-8 Camera Maintenance



Click  message "Are you sure to restart?" is displayed, then click "confirm", the device is restarted five minutes later.

Click  message "Are you sure to restore default settings?" is displayed, then click "Confirm", the device is restored to the factory settings.

 **CAUTION**

After you click  all parameters (you can choose whether to reserve the IP address) will be restored to the factory settings. Use this function carefully.

