






Knight Watch 20

Install Guide

Precautions

Please read this document before installing the device and strictly observe the guidance when using the device. When installing this device in a public space follow Information Commissioner's Office (ICO) guidance regarding CCTV signage. Failure to correctly use electrical products may cause fire and severe injuries.

 WARNING	It alerts you to moderate dangers which, if not avoided, may cause minor or moderate injuries.
 CAUTION	It alerts you to risks. Neglect of these risks may cause device damage, data loss, device performance deterioration, or unpredictable results.
 NOTE	It provides additional information.

WARNING

- Strictly observe installation requirements when installing the device. The manufacturer shall not be held responsible for damage caused by users non-conformance to those requirements.
- Strictly conform to local electrical safety standards and use power adaptors that are marked with the LPS standard when installing and using this device. Otherwise, this device may be damaged.
- Use accessories delivered with this device. The voltage must meet input voltage requirements for this device.
- If this device is installed in place with unsteady voltage, ground this device to discharge high energy such as electrical surges to prevent the power supply from burning out.
- When this device is in use, ensure that no water or liquid flows into the device. If it does, immediately power off the device and disconnect all cables (such as power cables and network cables).

- Do not focus strong light (such as light bulbs or sunlight) on this device. Otherwise, the service life of the image sensor may be shortened.
- If this device is installed in places where thunder and lightning frequently occur, ground the device nearby to discharge high energy such as lightning strikes to prevent device damage.



CAUTION

- Avoid heavy loads, intensive vibration, and soaking to prevent damage during transportation and storage. The warranty does not cover any device damage that is caused during secondary packaging and transportation after the original packaging is taken apart.
- Fix the device securely out of reach of mechanical damage and keep the device away from magnetic field interference. Do not install the device on moving surfaces or in locations subject to shock waves.
- Clean the device with a soft dry cloth. For stubborn dirt, dip the cloth into diluted neutral cleanser, gently wipe the dirt with the cloth, and then dry the device.
- Do not jam the ventilation opening. Follow the installation instructions provided in this document when installing the device.
- Keep the device away from heat sources such as radiators, electric heaters, or other heated equipment.
- Keep the device away from moist, dusty, extremely hot, or cold places, and away from strong electro-magnetic radiation.
- If the device is installed outdoors, take insect and moisture proof measures to avoid circuit board corrosion that can adversely affect camera performance.
- Remove the power plug if the device is not used for a long period of time.
- Before unpacking, check whether the fragile sticker is damaged. If the fragile sticker is damaged, contact customer services. The manufacturer shall not be held responsible for any third-party damage to the fragile sticker.

Special Announcement

- All complete products sold by the manufacturer are closely inspected and delivered with product labelling, quick setup guide and accessories. The manufacturer shall not be held responsible for counterfeiting of its products.
- The manufacturer will update this manual according to product function enhancement or changes and will regularly update the software and hardware described in this manual. Updated information will be added to new versions of this manual without prior notice.
- This manual may contain misprints, technical information that is not sufficiently accurate, or product function and operation description that is slightly inconsistent with the actual product, with the final interpretation determined by the manufacturer as standard.
- This manual is only for reference and does not ensure that the information is totally consistent with the actual product. If there is a variance, refer to the actual product for consistency.

NOTE

For more information, please refer to website.

1 Open Package Examination

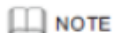
Open the package, check the appearance of the product for no obvious damage, and confirm the item list as demonstrated in table 1-1 is present.

Table 1-1 Packing List

Component	Quantity
Knight Watch 20 Bullet Camera	1
Install Guide	1
Installation location sticker	1
Hex Wrench	1
Wall plug 5.6x10mm	4
Base	1
Network access point protective cover	1
Alarm wiring terminal	2
Micro SD card set	1
Waterproof rubber seal	1
Video patch cord	1

2 Device Structure

2.1 Device Ports



NOTE

Different devices may have different ports and multi-head cable, please refer to the actual product.

Figure 2-1 Hardware Ports

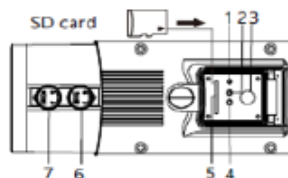


Table 2-1 Hardware ports description


ID	Port Name	Description
1	Reset button	Restores the camera to the factory settings by pressing and holding this button for more than five seconds.
2	NIC Indicator	When there is a network activity, the indicator flashes.
3	BNC Video	Sends an analogue video signal. You can connect the camera to a TV monitor through this port to view with analogue video.
4	SD card indicator	Indicate the card status, the status is described as follows: <ul style="list-style-type: none"> • Off: No card is inserted • On: an SD card is inserted.
5	SD card slot	Install an SD card.  NOTE <ul style="list-style-type: none"> • Before installing an SD card, verify that the card is not in write protection state. Otherwise, the data may be lost, or the SD card may be damaged.
6	Zoom button	N/A
7	Focusing button	

Figure 2-2 Multi-Head Cable

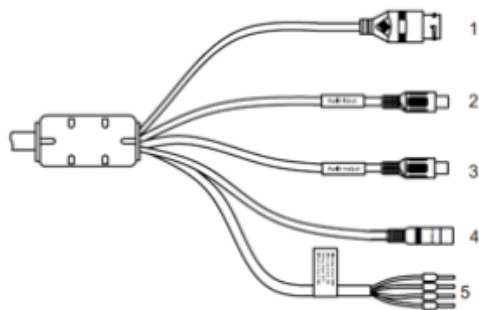


Table 2-2 Multi-Head Cable Description

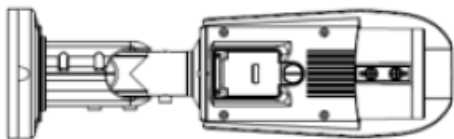
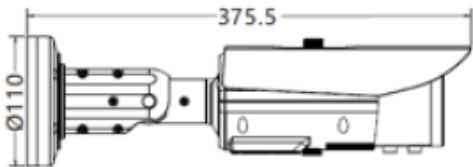
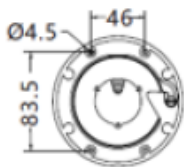
ID	Core	Description	Remark
1	Network access port	Connects to a standard Ethernet cable	
2	Audio input port	Receives an analogue audio signal	
3	Audio output port	Connects to an external audio device such as a speaker.	
4	Power Supply (DC 12V)	Connects to a 12V (-15%+10%) direct current (DC) power supply.	
5	Grey Core Purple Core Yellow Core Orange Core	Alarm output terminal A (normally open) Alarm output terminal B (normally open) Alarm input positive terminal Alarm input ground terminal	Applied for alarm function

2-2 Camera Dimensions



Different devices may have different dimensions, please refer to the actual product.

2-3 Dimensions (Unit: mm)



3 Device Installation

The Knight Watch 20 can be installed on the ceiling or wall. If the camera is installed on a concrete wall, insert the wall plugs before installing the bracket. If the camera is installed on a wooden wall, use self-tapping screws to install the bracket directly.

NOTE

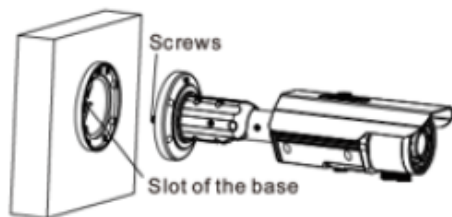
The wall where the bracket is installed must be able to bear at least three times the total weight of the bracket and the camera.

Installation Steps.

Step 1. Stick the installation location sticker on the ceiling or wall, drill three holes based on the markers on the sticker. Drive the wall plugs into the holes.

Step 2. Take out the base and the stainless self-tapping screws delivered with the camera. Use the stainless self-tapping screws to secure the base onto the ceiling or wall and mount the camera on the slot of the base using screws at the bottom of the camera, as shown in figure 3-1.

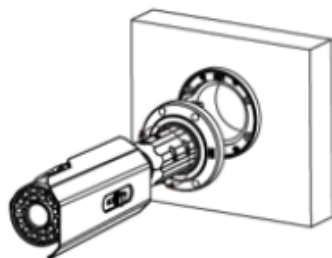
Figure 3-1 Installing Camera



Step 3. Adjust the position of the camera, expose the cable outlet, and connect the multi-head cable of the camera.

Step 4. Adjust the position of the camera based on the arrows marked on the figure 3-2. Align the installation holes and fix the camera on the base, as shown in figure 3-2.

Figure 3-2 Aligning the Screws



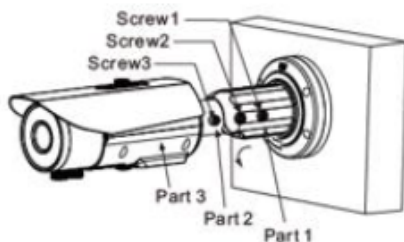
Step 5 Use the hex wrench to loosen screws 1 to 3, as shown in figure 3-3.

To rotate part 1 of the camera through 360°, loosen screw 1.

To tilt part 2 of the camera through 90°, loosen screw 2.

To rotate part 3 of the camera through 360°, loosen screw 3.

Figure 3-3 Loosening Screws



Step 6. Fasten screws.

4.1 Login

Step 1. Open Internet Explorer, enter the IP address of the IP camera (default value; 192.168.0.120) in the address box, and press Enter. The login page is displayed. As shown in figure 4-1.

Step 2. Input the username and password.



NOTE

The default username is admin. The default password is admin. Change the password when you log in to the system for the first time to ensure system security.

You can change the system display language on the login page.

 A screenshot of the Redvision login page. At the top left is the Redvision logo, which consists of a stylized red and grey shape followed by the text 'Redvision™'. To the right of the logo is a language dropdown menu currently set to 'English'. Below the logo and language menu are two input fields: 'User Name' and 'Password'. To the right of these fields is a grey button with a red arrow pointing to the right, representing the 'Login' button.

Step 3. Click Login, the main page is displayed.

4.2 Modify IP address

Choose Configuration > Device > Local Network, The Local Network page is displayed.

Enter the IP address in the IP address box and click Apply as shown in figure 4-2.

Once a new IP address has been applied, please use this to log in to the web interface.

Figure 4-2 Local Network

The screenshot shows a 'Local Network' configuration window. At the top, the title 'Local Network' is displayed. Below it, there are several sections for configuration:

- IP Protocol:** A dropdown menu set to 'IPv4'.
- DHCP:** A checkbox labeled 'DHCP' which is currently turned off.
- IP Address:** A text box containing '192.168.241.307'.
- Subnet Mask:** A text box containing '255.255.255.0'.
- Default Gateway:** A text box containing '192.168.241.3'.
- Preferred DNS Server:** A text box containing '192.168.0.1'.
- Alternate DNS Server:** A text box containing '192.168.0.2'.
- MTU(800-1500):** A text box containing '1400'.

At the bottom right of the window, there are two buttons: 'Refresh' and 'Apply'.

4.3 Browsing Video

To ensure the real-time video can be played properly, you must perform the following operation when you log in to the web for the first time:

Step 1. In Internet Explorer, select Tools > Internet options > Security > Trusted sites > Sites, in the display dialog box, click Add, as shown in figure 4-3.

Step 2. In Internet Explorer, select Tools > Internet Options > Security > Custom level, and set "Download unsigned ActiveX controls" to Enable, as shown in figure 4-4.

Figure 4-3 Adding a Trusted Site

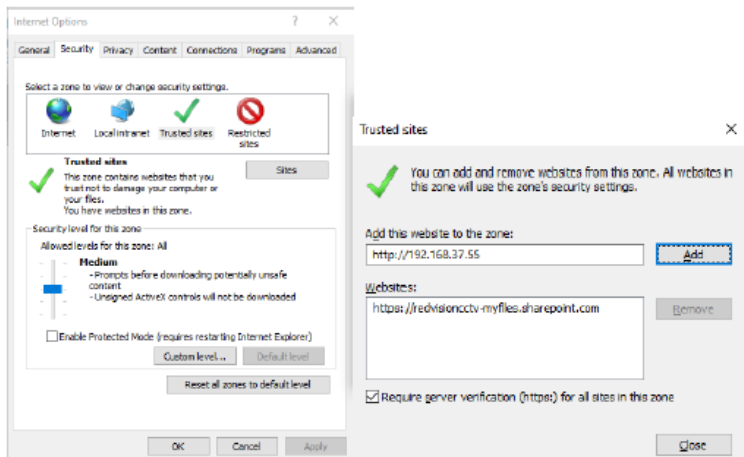
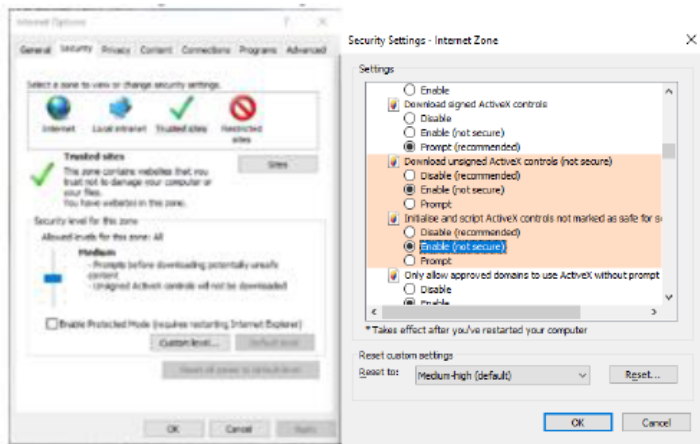


Figure 4-4 Configuring ActiveX Control and Plug-in



Step 3. Download and install the player control as prompted.

If repair tips is displayed when installing the control, please ignore the prompt, and continue the installation, the login page is displayed when the control is loaded.

To browse real-time video, click Live Video. The Live Video page is displayed, as shown in figure 4-5.

Figure 4-5 Live Video.




4.4 Two-way audio

4.4.1 Camera PC

Connection :

Step 1. Connect microphone to audio input interface of camera.


Step 2. Connect speaker to the PC audio output interface.

Step 3. Log in to camera Web, click  to turn on two-way audio.

4.4.2 PC Camera

Step 1. Connect microphone to PC audio input interface.

Step 2. Connect speaker to camera audio output interface.

Step 3. Log in to camera Web, click  to turn on two-way audio.

4.5 Alarm Configuration

Alarm input and Alarm output connection:

Step 1. Connect alarm input device to Alarm IN0 and Alarm COM0 of multi-head cable.

Step 2. Connect alarm output device to Alarm OUT1 and Alarm COM1 of multi-head cable, alarm output interface can connect to normal open device only.

Step 3. Log in to the Web browser, Choose Configuration > Alarm > I/O Alarm, set the parameters as shown in figure 4-6.

Step 4. Choose Configuration > Alarm > I/O Alarm Linkage, enable the I/O Alarm and set the parameters of Schedule Setting.

Figure 4-6 Alarm I/O

I/O Alarm	
Alarm input	1
Name	<input type="checkbox"/> 1
Valid Voltage Level	High
✓	
Alarm output	1
Name	<input type="text"/>
Valid Signal	Close
Alarm Output Mode	Switch Mode
Alarm Time(ms)(0:Continuous)	0
✓	
Manual Control	<input type="button" value="Start"/> <input type="button" value="Stop"/>
<input type="button" value="Refresh"/>	