



Knight Scan Install Guide

Precautions

Fully understand this document before using this device, and strictly observe rules in this document when using this device. If you install this device in public places, provide the tip "You have entered the area of electronic surveillance" in an eye-catching place. Failure to correctly use electrical products may cause fire and severe injuries.

If the equipment is disassembled for a long time, installed without power, or the device is not installed properly after debugging, it will affect the sealing, potentially causing the equipment to condensate.

	WARNING It alerts you to moderate dangers which, if not avoided, may cause minor or moderate injuries.
	CAUTION It alerts you to risks. Neglect of these risks may cause device damage, data loss, device performance deterioration, or unpredictable results.
	NOTE It provides additional information.

WARNING

- Strictly observe installation requirements when installing the device. The manufacturer shall not be held responsible for device damage caused by users' non-conformance to these requirements.
- Strictly conform to local electrical safety standards and use power adapters that are marked with the LPS standard when installing and using this device. Otherwise, this device may be damaged.
- Use accessories delivered with this device. The voltage must meet input voltage requirements for this device.
- If this device is installed in places with unsteady voltage, ground this device to discharge high energy such as electrical surges in order to prevent the power supply from burning out.
- When this device is in use, ensure that no water or any liquid flows into the device. If water or liquid unexpectedly flows into the device, immediately power off the device and disconnect all cables (such as power cables and network cables) from this device.
- Do not focus strong light (such as lighted bulbs or sunlight) on

this device. Otherwise, the service life of the image sensor may be shortened.

- If this device is installed in places where thunder and lightning frequently occur, ground the device nearby to discharge high energy such as thunder strikes in order to prevent device damage.

CAUTION

- Avoid heavy loads, intensive shakes, and soaking to prevent damages during transportation and storage. The warranty does not cover any device damage that is caused during secondary packaging and transportation after the original packaging is taken apart.
- Protect this device from fall-down and intensive strikes, keep the device away from magnetic field interference, and do not install the device in places with shaking surfaces or under shocks.
- Clean the device with a soft dry cloth. For stubborn dirt, dip the cloth into slight neutral cleanser, gently wipe the dirt with the cloth, and then dry the device.
- Do not jam the ventilation opening. Follow the installation instructions provided in this document when installing the device.
- Keep the device away from heat sources such as radiators, electric heaters, or other heat equipment.
- Keep the device away from moist, dusty, extremely hot or cold places, or places with strong electric radiation.
- If the device is installed outdoors, take insect- and moisture-proof measures to avoid circuit board corrosion that can affect monitoring.
- Remove the power plug if the device is idle for a long time.

Special Announcement

- All complete products sold by the manufacturer are delivered along with nameplates, quick setup guide and accessories after strict inspection. The manufacturer shall not be held responsible for counterfeit products.
- The manufacturer will update this manual according to product function enhancement or changes and regularly update the software and hardware described in this manual. Update information will be added to new versions of this manual without prior notice.
- This manual may contain misprints, technology information that is not accurate enough, or product function and operation description that is slightly inconsistent with the actual product, the final interpretation of company is as a standard.
- This manual is only for reference and does not ensure that the information is totally consistent with the actual product. For consistency, see the actual product.

NOTE

For more information, please refer to our website.

1 Packing List

Open the package, check the appearance of product for no obvious damage, and confirm whether the items are consistent with the list.

Table 1-1 Packing list

Component	Quantity	Remark
Knight Scan network camera	1	
Quick setup guide	1	
L hexagonal wrench	1	
Installation location sticker	1	
Stainless self-tapping screw	2	
Plastic anchor	2	

2 Device Structure

2.1 Device Ports

NOTE

Different devices may have different device ports; Please refer to the actual product.

Figure 2-1 Device ports

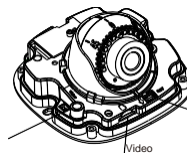


Table 2-1 Interface of c

Port name	Description	Remark
SD card slot	Insert SD card.	
Reset button	Long press the reset button for 5 seconds to restore the original settings.	

Different devices may have different device ports; Please refer to the actual product.

Figure 2-2 Multi-head cable 1



Table 2-2 Multi-head cable description

ID	Core	Description	Remark
1	Network access port	Connect to a standard Ethernet cable or PoE. The green light is on, the network connection is normal; The yellow light flashes when the data is transmitted. Some models maybe not have the lights, please refer to the actual product.	Support PoE supply.
2	Power supply (DC 12V)	Connect to a 12V direct current (DC) power supply.	

Figure2-3 Multi-head cable 2

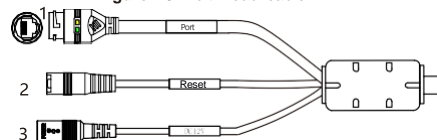


Table 2-3 Multi-head cable 2 description

ID	Core	Description	Remark
1	Network access port	Connect to a standard Ethernet cable or PoE. The green light is on, the network connection is normal; the yellow light flashes when the data is transmitted. Some models maybe not have the lights; Please refer to the actual product.	
2	Reset button	Long press the reset button for 5 seconds to restore the original settings.	
3	Power supply (DC 12V)	Connect to a 12V direct current (DC) power supply	

Figure2-4 Multi-head cable 3

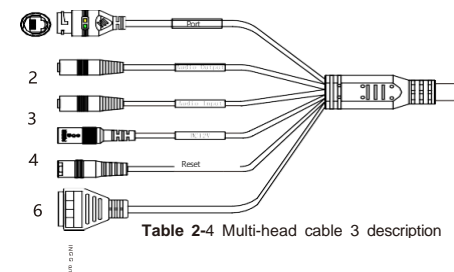


Table 2-4 Multi-head cable 3 description

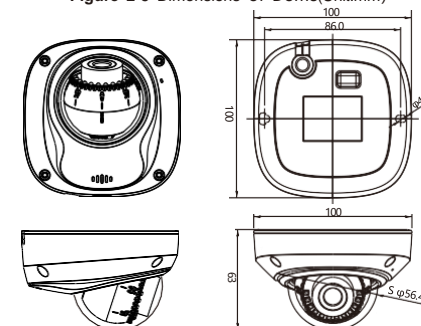
ID	Core	Description	Remark
1	Network access port	Connect to a standard Ethernet cable or PoE. The green light is on, the network connection is normal; The yellow light flashes when the data is transmitted. Some models maybe not have the lights; Please refer to the actual product.	Support PoE supply.
2	Audio output	Connects to an external audio device such as a speaker.	Applied for camera with audio function
3	Audio input port	Receives an analog audio signal from devices such as a sound pickup device.	
4	Reset button	Long press the reset button for 5 seconds to restore the original settings.	
5	Power supply (DC 12V)	Connects to a 12V direct current (DC) power supply.	
6	G	Alarm output COM	Applied for alarm function
	OUT	Alarm output terminal	
	G	Alarm input COM	
	IN	Alarm input terminal	

2.2 Camera Dimensions

NOTE

Different devices may have different dimensions; Please refer to the actual product.

Figure 2-5 Dimensions of Dome(Unit:mm)



3 Device Installation

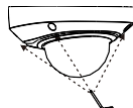
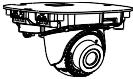
WARNING
To avoid moisture influence, install the dome cover at least half an hour after the camera is installed and powered on.

The Knight Scan camera can be installed in the ceiling, wall, wall bracket or ceiling bracket. This section describes how to install the camera in the ceiling.

Installation Steps:

- Step 1 Stick the Installation location sticker which is in accessory package on the ceiling or wall. Drill two holes based on the marks on the sticker. Drive the plastic anchor into the holes.
- Step 2 Use the wrench in the accessory package to unscrew the three screws on the dome cover. The camera is opened, as shown in figure 3-1.

Figure 3-1 Opening camera

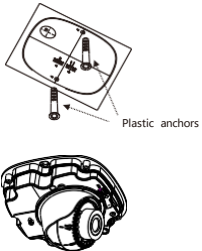


- Step 3 Fetch two black self-tapping screws from the accessory

package. Then fix the screws to fasten the camera on the ceiling as shown in figure 3-2.

- Step 4 Connect the network access port and power supply of the multi-head cables.

Figure 3-2 Installing camera

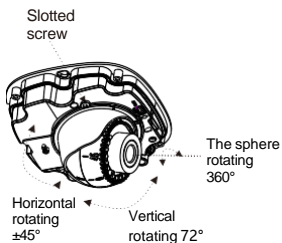


NOTE

- There are two outlet mode of cable, for the top outlet mode, user should drill the hole at first for threading cable.
- The side outlet mode that the installation sticker's gap should align the outlet rubber stopper.

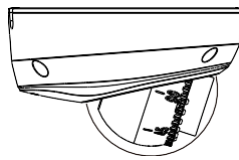
- Step 6 Connect the camera to the monitor, loosen the screws of support frame, as shown in figure 3-3. Adjust the three axes to focus image on monitoring scenarios. Tighten the screws to finish adjustment.

Figure 3-3 Adjusting the lens



- Step 7 Assemble the dome cover with hex wrench, as shown in figure 3-4.

Figure 3-4 Assembling the cover



4 Quick Configuration(e.g Edge)

4.1 Login

- Step 1 Open the **Microsoft Edge** browser (switch to IE mode), enter the IP address of IP camera (default value: 192.168.0.120) in the box, and press **Enter**. The login page is displayed as shown in figure 4-1.

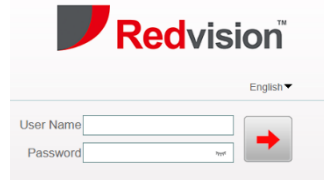
- Step 2 Input the user name and password.

NOTE

- Access the web at Microsoft Edge browser where the mode should switch to **Reload in Internet Explorer mode**. At browser "Setting > Default browser" page, **Let Internet Explorer open sites in Microsoft Edge** choose "Always (Recommended)"; **Allow sites to be reloaded in Internet Explorer mode (IE mode)** choose "Allow".
- The default user name is admin. The default password is admin.

- Change the password when you log in the system for first time to ensure system security.
- It is advised to restart the device three minutes later after modifying the password.
 - You can change the system's display language on the login page.

Figure 4-1 Login



- Step 3 Click **Login** icon, the main page is displayed.

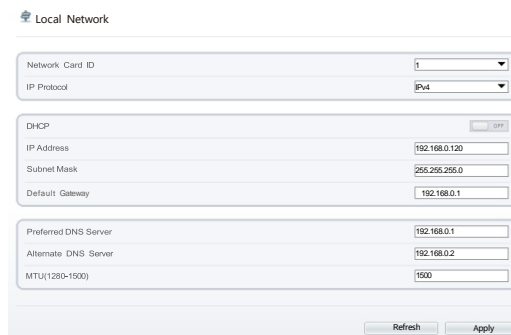
4.2 Modify IP address

Choose **Configuration > Device > Local Network**, the **Local Network** page is displayed.

Input the IP address in the IP Address box and click **Apply** as shown in figure 4-2.

After the IP address is set successfully, please use the new IP address to login the Web interface.

Figure 4-2 Local Network

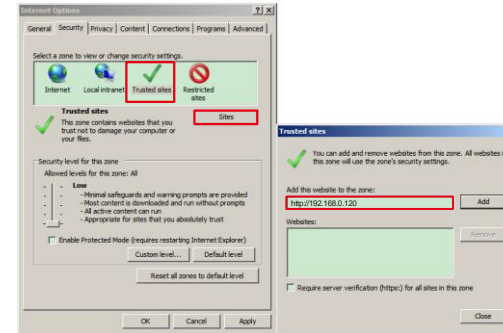


4.3 Browsing Video

To ensure the real-time video can be played properly, you must perform the following operation when you login the web for the first time:

- Step 1 In Microsoft Edge, Choose **Control panel > Internet options > Security > Trusted sites > Sites**, in the display dialog box, click **Add**, as shown in figure 4-3.

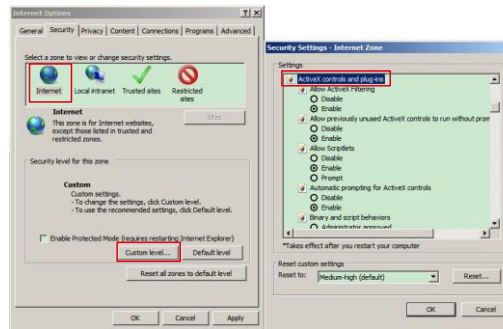
Figure 4-3 Adding a trusted site



- Step 2 In Microsoft Edge, choose **Control pane > Internet Options > Security > Custom level**, and set **Download unsigned ActiveX control** and **initialize and script ActiveX controls not marked as safe for scripting under ActiveX controls and**

plug-ins to Enable, as shown in figure 4-4.

Figure 4-4 Configuring ActiveX control and plug-in



- Step 3 Download and install the player control as prompted.

NOTE

If the repair tips are displayed when installing the control, please ignore the prompt, and continue the installation, close the browser during installing. Then login the page again.

To browse a real-time video, login the device and click **Live Video**. The Live Video page is displayed, as shown in figure 4-5.

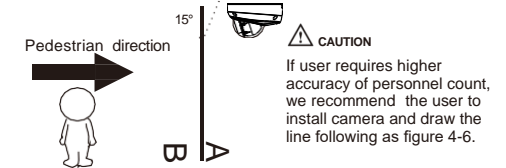
Figure 4-5 Live Video



1 Personnel Count: User can query the data of personnel count, by year, month, day. The statistics can be downloaded. The data can be displayed by line chart, histogram, and list.

2 AI Live video: Click the icon to view the snapshots of human face or license plate (click "Face" or "Plate" to switch). The bottom page will show the captured images of vehicle and human face.

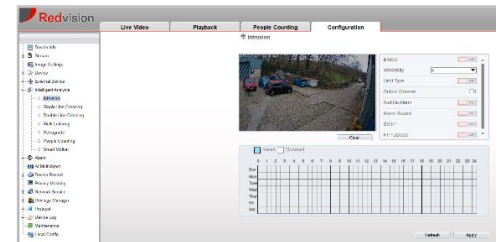
Figure 4-6 Installation of personnel count



4.4 Intelligent Analysis

At "Configuration > Intelligent Analysis" interface, users can set the parameters of Perimeter, Single Virtual Fence, Double Virtual Fence, Multi Loiter, Converse and Personnel Count, as shown in figure 4-7.

Figure 4-7 Intelligent Analysis



4.5 AI Multi object

At "Configuration > AI Multi object" interface, users can enable face detection, full body detection, vehicle detection, set the other parameters of detection, as shown in figure 4-8.

Figure 4-8 AI Multi-object

