



## Knight Sight Install Guide

### Precautions

If the equipment is disassembled for a long time, installed without power, or the device is not installed properly after debugging, it will affect the sealing, potentially causing the equipment to condensate.

Fully understand this document before using this device, and strictly observe rules in this document when using this device. If you install this device in public places, provide the tip "You have entered the area of electronic surveillance" in an eye-catching place. Failure to correctly use electrical products may cause fire and severe injuries.

	It alerts you to moderate dangers which, if not avoided, may cause minor or moderate injuries.
	It alerts you to risks. Neglect of these risks may cause device damage, data loss, device performance deterioration, or unpredictable results.
	It provides additional information.

#### WARNING

- Please observe specific installation requirements when installing the device. The manufacturer shall not be responsible for device damage caused by users' non-conformance to these requirements.
- Strictly conform to local electrical safety standards and use power adapters that are marked with the LPS standard when installing and using this device. Otherwise, this device may be damaged.
- Use accessories delivered with this device. The voltage must meet input voltage requirements for this device.
- If this device is installed in places with unsteady voltage, ground this device to discharge high energy such as electrical surges in order to prevent the power supply from burning out.
- When this device is in use, ensure that no water or any liquid flows into the device. If water or liquid unexpectedly flows into the device, immediately power off the device and disconnect all cables (such as power cables and network cables) from this device.

- Do not focus strong light on this device. Otherwise, the service life of the image sensor may be shortened.
- If this device is installed in places where thunder and lightning frequently occur, ground the device nearby to discharge high energy such as strikes in order to prevent damage.

#### CAUTION

- Avoid heavy loads, intensive shakes, and soaking to prevent damage during transportation and storage. The warranty does not cover any device damage that is caused during secondary packaging and transportation after the original packaging is taken apart.
- Protect this device from fall-down and intensive strikes, keep the device away from magnetic field interference, and do not install the device in places with shaking surfaces or under shocks.
- Clean the device with a soft dry cloth. For stubborn dirt, dip the cloth into slight neutral cleanser, gently wipe the dirt with the cloth, and then dry the device.
- Do not jam the ventilation opening. Follow the installation instructions provided in this document when installing the device.
- Keep the device away from heat sources such as radiators, electric heaters, or other heat equipment.
- Keep the device away from moist, dusty, extremely hot, or cold places, or places with strong electric radiation.
- If the device is installed outdoors, take insect- and moisture-proof measures to avoid circuit board corrosion that can affect monitoring.
- Remove the power plug if the device is idle for a long time.

### Special Announcement

- All complete products sold by the manufacturer are delivered along with nameplates, quick setup guide and accessories after strict inspection. The manufacturer shall not be responsible for counterfeit products.
- The manufacturer will update this manual according to product function enhancement or changes and regularly update the software and hardware described in this manual. Update information will be added to new versions of this manual without prior notice.
- This manual may contain misprints, technology information that is not accurate enough, or product function and operation description that is slightly inconsistent with the actual product, the final interpretation of company is as a standard.

#### NOTE

For more information, please refer to our website.

## 1 Packing List

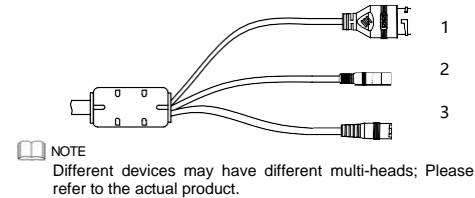
Open the package, check the appearance of product for no obvious damage and confirm whether the items are consistent with the list.

Table 1-1 Packing list

Component	Quantity	Remark
Knight Sight vandal dome camera	1	
Quick setup guide	1	
T15 screwdriver	1	
Installation location sticker	1	
Stainless self-tapping screw	3	
Plastic wall plugs	3	
Network access port protective cover	1	
Waterproof rubber seal	1	
Terminal block	1	Optional
Phillips stainless screw (install on bracket)	3	

## 2 Device Structure

Figure2-1 Multi-head cable 1



Different devices may have different multi-heads; Please refer to the actual product.

Table 2-1 Multi-head cable description

ID	Core	Description	Remark
1	Network access port	Connects to a standard Ethernet cable or PoE. The green light is on, the network connection is normal, the yellow light flashes when the data is transmitted. Some models may not have lights, please refer to the actual product.	Support PoE supply.
2	Power supply (DC 12V)	Connects to a 12V direct current (DC) power supply. Do not use with PoE.	
3	Reset button	Press the button for 5 seconds, to restore the original settings.	

Figure2-2 Multi-head cable 2

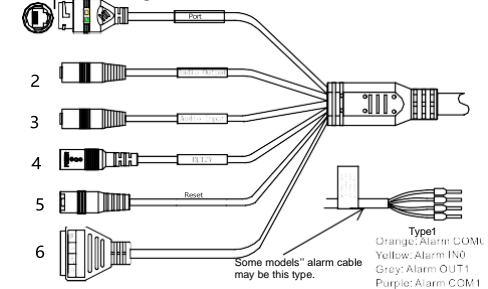


Table 2-2 multi-head cable 2 description

ID	Core	Description	Remark
1	Network access port	Connects to a standard Ethernet cable or PoE. The green light is on, the network connection is normal, the yellow light flashes when the data is transmitted. Some models may not have lights, please refer to the actual product.	Supports PoE supply.
2	Audio output	Connects to an external audio device such as a speaker.	Applied for cameras with audio function
3	Audio input port	Receives an analog audio signal from devices such as a microphone.	
4	Reset button	Press the reset button for 5 seconds, to restore the original settings.	
5	Power supply (DC 12V)	Connects to a 12V DC power supply. Do not use with PoE supply.	
6	G	Alarm output COM	Applied for alarm function
	OUT	Alarm output terminal	
	G	Alarm input COM	
	IN	Alarm input terminal	

### 2.1 Camera Dimensions



NOTE

Different devices may have different dimensions; Please refer to the actual product.

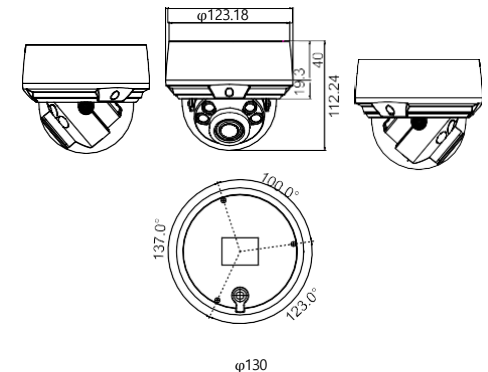


Figure 2-3 Dimensions of Dome(Unit: mm)

### 3 Device Installation



WARNING



View the video, loosen the slotted screw slightly as shown in figure 3-4 & figure 3-5, make camera's triaxial adjustments, adjust the screen to the scene you want to monitor, and then tighten the screws. Three-axis adjustment direction and angle are shown in figure 3-4 and figure 3-5.

Figure 3-4 Three-axis adjustment

Figure 3-5 Adjusting lens

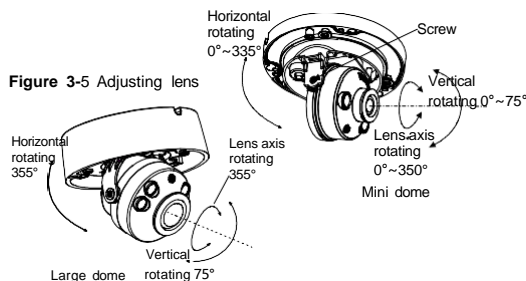
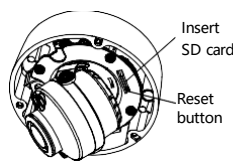


Figure 3-6 Installing SD card



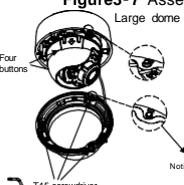
NOTE

- Some models may not require as many steps; Please refer to the actual product.
- If the lens of camera is an auto focus lens, set the focus value from the web GUI.

Step 7 Assemble the lining with the main body and buckle the four button placements with the main body bracket. Aim the two screws hole with boss at the groove in the main

body. Then fasten the dome cover, as shown in figure 3-7.

Figure3-7 Assembling lining and cover



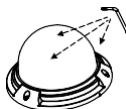
To avoid moisture influence, install the dome cover at least half an hour after the camera is installed and powered on.

The vandal dome camera can be installed in the ceiling, wall, wall bracket or ceiling bracket. This section describes how to install the camera in the ceiling.

#### Installation Steps:

Step 1 Use the T screw driver in the accessory package to unscrew the three screws on the dome cover. The camera is opened, as shown in figure 3-1.

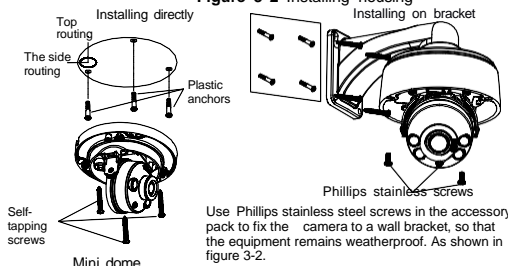
Figure 3-1 Opening camera



Step 2 Stick the Installation location sticker on the ceiling or wall. Drill three holes based on the marks on the sticker. Drive the plastic wall plugs into the holes.

Step 3 Fetch three black self-tapping screws from the accessory package. Then fix the screws to fasten the camera on the ceiling as shown in figure 3-2.

Figure 3-2 Installing housing

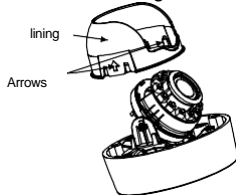


Step 4 Connect the network access port and power supply of the multi-head cable.

Step 5 Adjust the video angle range.

1. Press the arrows marked on the lining to remove the lining aside, as shown in figure 3-3.

Figure 3-3 Removing lining



Large dome with lining



NOTE

- Access the web at Microsoft Edge browser where the mode should switch to **Reload in Internet Explorer mode**. At browser "Setting > Default browser" page, **Let Internet Explorer open sites in Microsoft Edge** choose "Always (Recommended)"; **Allow sites to be reloaded in Internet Explorer mode (IE mode)** choose "Allow".
- The default username is admin. The default password is admin. Change the password when you log in the system for first time to ensure system security.
- It is advised to restart the device three minutes later after modifying the password.
- You can change the system's display language on the login page.

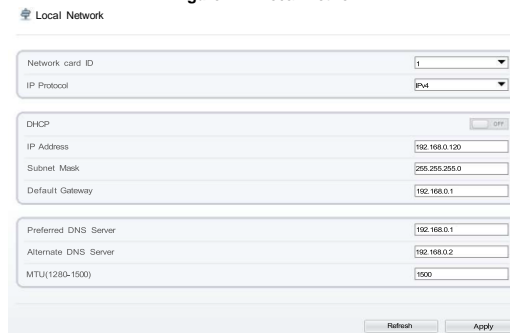
Step 3 Click Login, the main page is displayed.

## 4.2 Modify IP address

Choose **Configuration > Device > Local Network**, the **Local Network** page is displayed. Enter the IP address in the IP Address box and click **Apply** as shown in figure 4-2.

After the IP address is set successfully, please use the new IP

Figure 4-2 Local Network



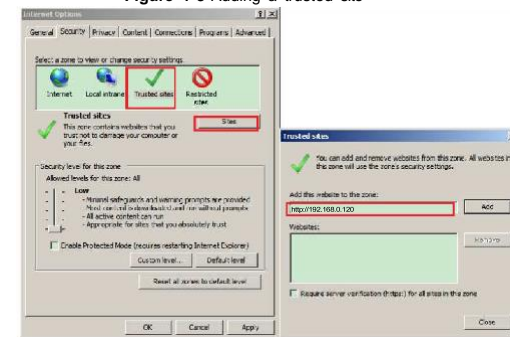
## 4.3 Browsing Video

To ensure the real-time video can be played properly, you must perform the following operation when you log in the web for the first time:

Step 1 In Microsoft Edge, choose **Control panel > Internet options > Security > Trusted sites > Sites**, in the display dialog box, click

Add, as shown in figure 4-3.

Figure 4-3 Adding a trusted site



Step 2 In Microsoft Edge, choose **Control panel > Internet Options > Security > Custom level**, and set **Download unsigned ActiveX control** and **initialize and script ActiveX controls not marked as safe for scripting under ActiveX controls and plug-ins** to **Enable**, as shown in figure 4-4.

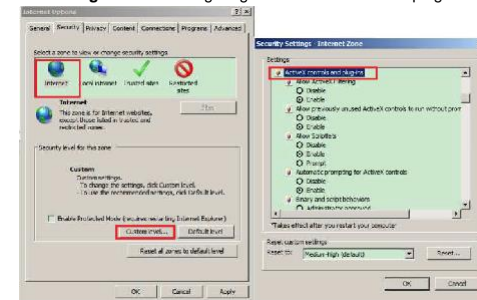
Step 3 Download and install the player control as prompted.



NOTE

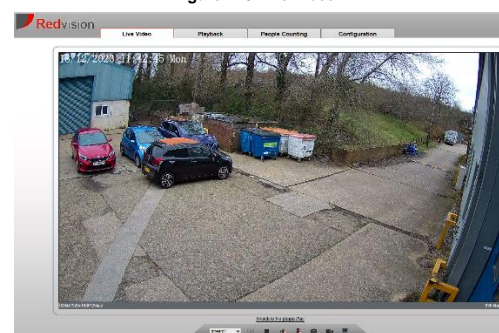
If the repair tips are displayed when installing the control, please ignore the prompt, and continue the installation, the login page is displayed when the control is loaded.

Figure 4-4 Configuring ActiveX control and plug-in



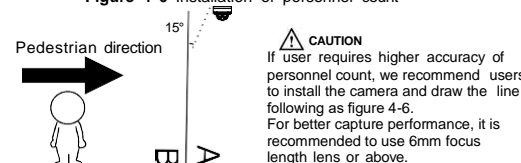
To browse real-time video, click Live Video. The Live Video page is displayed, as shown in figure 4-5.

Figure 4-5 Live Video



- 1 Personnel Count: Users can query the data of personnel count, by year, month, day. The statistics can be downloaded. The data can be displayed by line chart, histogram, and list.
- 2 AI Live video: Click the icon to view the snapshots of human face or license plate (click "Face" or "Plate" to switch). The bottom page will show the captured images of vehicle and human face.

Figure 4-6 Installation of personnel count



## 4.4 Intelligent Analysis

At "Configuration > Intelligent Analysis" interface, users can set the parameters of Perimeter, Single Virtual Fence, Double Virtual Fence, Multi Loiter, Converse and Personnel Count, as shown in figure 4-7.

Figure 4-7 Intelligent Analysis



## 4.4 AI Multi object

At "Configuration > AI Multi object" interface, users can enable face detection, full body detection, vehicle detection, set the other parameters of detection.