

RVK-C40-IR

## Knight Capture 40



### Key Features

- 1/1.8" Progressive Scan CMOS, 4MP Sensor
- PoE for Simple Plug and Play Connection
- Max Recognition Speed of 120km/h
- Motorised Zoom Lens with Smart Auto Focus, 8-32mm lens.
- Easy Positioning
- Cast Aluminium Body
- ONVIF Profile S, G & T Compliant
- 80m Adaptive IR Integral LEDs
- Intelligent Video Analytics
- Audio In/ Out
- Up to 4,000 blacklist and whitelist
- Supports Wiegand, connectable with access control system.

## Knight Capture 40 ANPR Camera

The Knight Capture 40 ANPR camera harnesses advanced imaging and recognition technology, featuring a high-performance 1/1.8" progressive scan Sony CMOS sensor that delivers 4MP resolution at up to 50/60fps. Designed specifically for automatic number plate recognition (ANPR) applications, it integrates an intelligent AI-powered LPR algorithm capable of recognising number plates at speeds of up to 120km/h. The camera is equipped with an 8–32mm motorised zoom lens with auto focus to ensure precise capture at varying distances.

### AI-Powered ANPR & Smart Recognition

Utilising advanced AI technology, the Knight Capture 40 offers accurate license plate recognition, even in high-speed environments. The camera supports up to 4,000 whitelist and blacklist number plates for real-time monitoring and control. Wiegand protocol compatibility allows seamless integration with access control systems for automated entry or alerts.

### Enhanced Infrared Performance

Smart IR illumination offers an impressive range of up to 80m, automatically adjusting intensity based on zoom and scene content to ensure optimal clarity in all lighting conditions.

### Robust Motorised Zoom

An 8–32mm motorised lens with Smart Auto Focus enables easy setup and fine-tuning, ensuring plate capture remains sharp at both close and extended distances—day or night.

### Durable, Weatherproof Design

Housed in a rugged, cast aluminium body rated to IP66 and IK10, the Knight Capture 40 is built to withstand tough environments and physical impact. A secure and sleek form factor provides maximum protection without compromising aesthetic appeal.

## Audio Integration & Edge Recording

With a built-in microphone and speaker, plus 1 audio input and 1 audio output, the Knight Capture 40 enables full two-way audio functionality for enhanced situational awareness. Edge recording is supported via a built-in SD card slot, accommodating up to 1TB of storage for local video archiving and network failure resilience.

## ONVIF Compliant

Compatible with ONVIF Profiles S, G, and T, the Knight Capture 40 integrates easily with leading VMS platforms and NVRs. Support for H.265 encoding ensures high-quality image transmission with efficient use of bandwidth and storage.

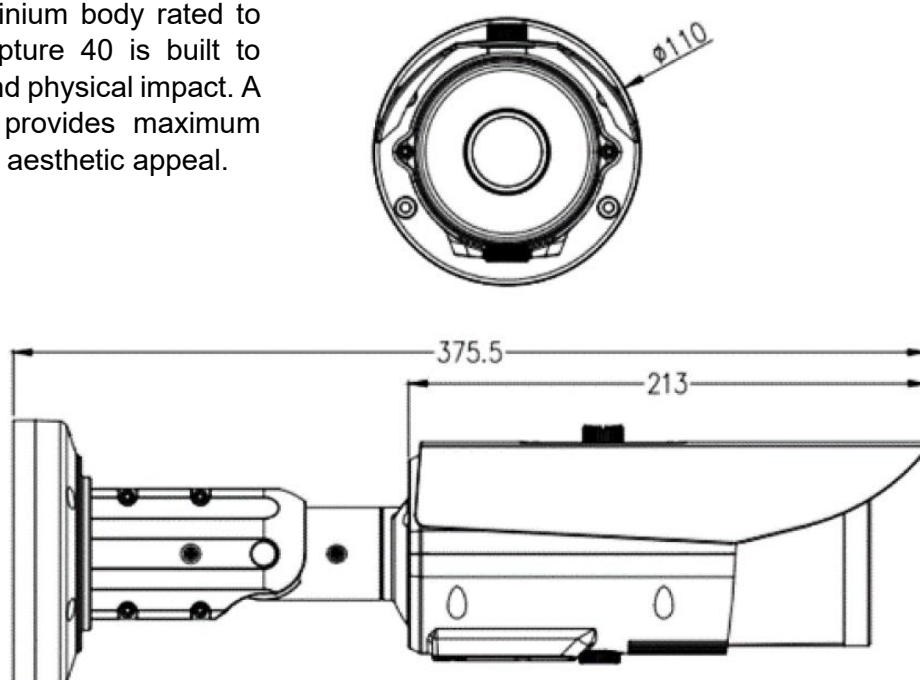
## Additional Features

Advanced video analytics, smart encoding, motion detection, and region of interest (ROI) settings allow for scene-specific optimisation—ensuring recording and alerts are focused on the most relevant activity.

## Simple, Flexible Installation

A 3D positioning bracket makes mounting and alignment straightforward, while an adjustable sunshield helps eliminate glare in a wide range of lighting conditions.

## Dimensions

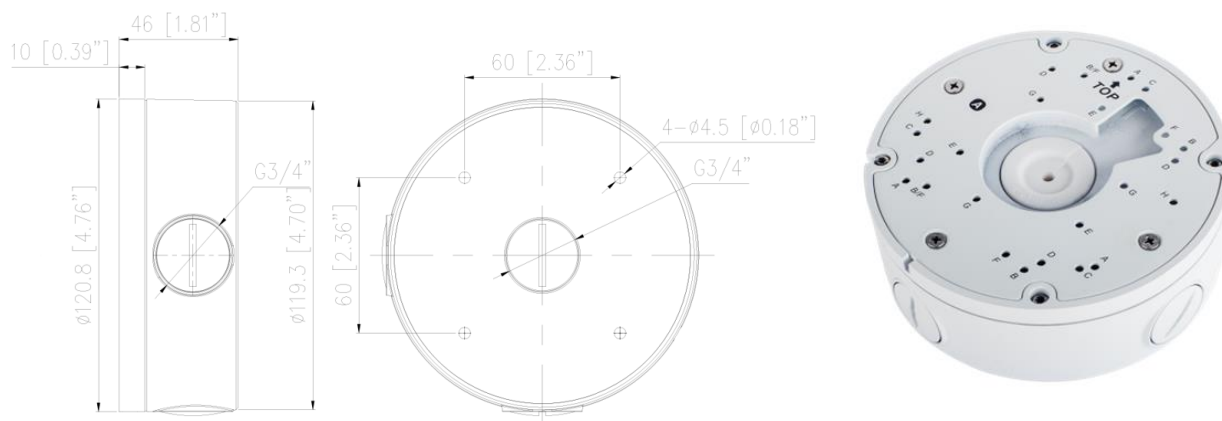


Camera	
Image Sensor	1/1.8" Progressive Scan CMOS
Max. Resolution	4MP (2688×1520)
Electronic Shutter	Auto/Manual, 1/5 to 1/100,000 s
Min. illumination	Colour: 0.0025 Lux @ (F1.2, AGC ON), B/W: 0 Lux with IR
Day & Night	IR cut filter
S/N Ratio	55dB
Wide Dynamic Range	True WDR
Angle Adjustment	Pan: 0° to 360°, Tilt: 0° to 90°, Rotation: 0° to 360°
Lens	
Lens Type	Motorized lens, motorized focus
Iris	Auto Iris
Focal Length	8 to 32 mm
Max. Aperture	F1.6
Field of View (FOV)	8 to 32 mm - H: 41.1° to 14°, V: 23° to 7.9°
Illuminator	
Supplement Light	IR
Light Control	Auto/Manual
Illumination Distance	Up to 80 m
LPR	
Vehicle Speed	Up to 120km/h
Country Region Supported	Europe: UK, Italy, Netherlands Middle East: Oman, Saudi Arabia, Africa: South Africa Asia-Pacific: China, China Taiwan, Thailand, Vietnam, India, Indonesia Malaysia, Singapore America: Chile, USA (Customisable others)
White/Black List	Up to 4,000 records
LPR Smart Search	Supported
Intelligent Analytics	
Intelligent Analysis	Intrusion, Single line crossing, Double line crossing, Wrong-way detection, and Smart motion detection Support alarm triggering by specified target types (vehicle)

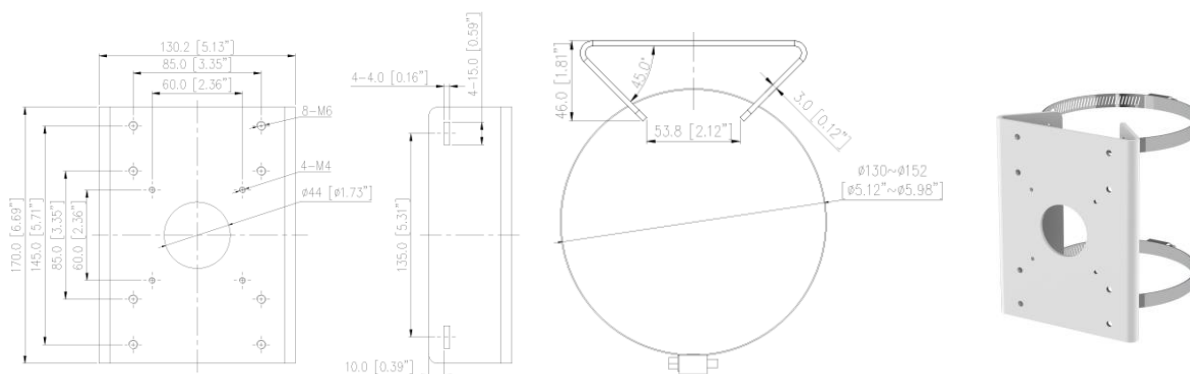
Video and Audio	
Streaming Capability	3 Streams
Stream/Frame Rate	Stream1: 2688×1520, 1920×1080, 1280×720 @50/60 fps Stream2: D1, VGA, CIF @ 25/30 fps Stream3: VGA, CIF, QVGA @ 25/30 fps
Bit Rate Control	CBR/VBR
Bit Rate	Stream1: 200 kbps to 16 Mbps Stream2: 100 kbps to 6 Mbps Stream3: 100 kbps to 3 Mbps
Region of Interest	Off/On (8 areas, Rectangle)
Smart Encode	Support
Audio Compression	G.711 A-law, G.711 μ-law, RAW PCM
Audio Bit Rate	64 Kbps (G.711), 128 Kbps (RAW_PCM)
Image	
Image Adjustment	Brightness, Sharpness, Contrast, Saturation adjustable
Mirror	Supported
White Balance	Auto/Manual
Day/Night Setting	Auto, Day, Night, Time
Noise Reduction	2D/3D DNR
Image Enhancement	HLC, BLC, Defog, WDR
Privacy Masking	4 areas
Event	
Alarm Triggers	IVS, Motion detection, Alarm input, Network alarm, Disk alarm, Day/Night switch alarm, Abnormal sound detection
Event Actions	Alarm record, Alarm output, Wiegand output, FTP upload, SMTP upload, Audible alarm output
Network	
Protocols	IPv4/IPv6, HTTP/HTTPS, DNS, DDNS, DHCP, PPPoE, RTSP/ RTP/RTCP, TCP/UDP, NTP, ARP, UPnP, FTP, SMTP, QoS, ICMP, IGMP, SMTP, 802.1x, SNMP, Multicast
Interoperability	ONVIF (Profile S/T/G/M), SDK, CGI
User/Host Level	Up to 10 users, 3 levels: Administrator, Operator, Media user
Security	IP address filter, encrypted HTTPS, Illegal login lock, IEEE 802.1x
Web Viewer	<IE11, Chrome, Firefox, Microsoft Edge

Interface	
Network Interface	1 Ethernet (10/100 Base-T) RJ-45 Connector
Built-in Microphone	Supported
Built-in Speaker	Supported
Audio Interface	1ch Input, 1ch Output
Alarm Interface	1ch Input, 2ch Output
RS-485	1 RS-485
Wiegand Interface	1 Wiegand (26-bit, SHA-1 26-bit, 34-bit, and NEWG 72-bit)
SD Card Slot	Built-in, up to 1 TB
Reset Button	Support
General	
Language	English, Polish, Italian, Portuguese, Spanish, Russian, French, Czech, Hungarian. Default: English
Power Supply	DC12V (-15% to +25%)/PoE (802.3af)
Power Consumption	Max 13.2W
Operating Temperature	-40°C to 60°C
Operating Humidity	Less than 90% RH
Ingress Protection	IP66
Impact Rating	IK10
Certifications	CE-EMC (EN 55032:2015+A1:2020, EN 55035:2017+A11:2020, EN 50130-4:2011+A1:2014, EN IEC 61000-6-4:2019, EN IEC 61000-3-2:2019+A1:2021, EN 61000-3-3:2013+A2:2021) FCC (FCC 47 CFR 15, Subpart B, ANSI C63.4-2014)
Casing	Aluminium
Dimensions	φ110 × 356.3 mm
Net Weight	1.5 kg

## RVK-W-JB: Junction Box for Knight Watch Cameras



## RVK-POLE1: Pole Clamp for Knight Series Cameras



## Further information:

