



# Our Products





# WHO WE ARE...

---



## UK Design & Manufacture

With its headquarters in Hampshire, UK, Redvision CCTV has decades of experience in the design and manufacture of rugged CCTV solutions. Fully accredited ISO:9001 company, its manufacturing processes and procedures are strictly monitored to ensure the very best in build quality and product reliability.



## Quality Products

Redvision products are synonymous with quality, all moving parts are designed to last; from long-life, tooled silicone wiper to the motor technology used in the pan and tilt mechanisms. Famous for rugged pan and tilt cameras, the X-Series range boasts a marine-grade finish as standard and an MTBF in excess of seven years.



## Rugged CCTV Specialists

The Redvision team has unprecedented knowledge in rugged CCTV products and applications, with in-house experts possessing decades of experience. Redvision understand CCTV products and utilises this expertise to provide the latest in innovative product development, designed to supply quality solutions in tough environments.

# CONTENTS

---



X-Series

---

4 - 15



VEGA  
VEGA Thermal

---

16-19



4G/5G Hub

---

20-23



RedCop

---

24-25



VMS 1000

---

26-27



Knight Series

---

28-31



# X4 COMMANDER

"Our flagship PTZ Camera boasting high performance"

---



# OUR **BEST** IN CLASS...

---

## *The Rugged PTZ Camera*

The X4 Commander utilises state-of-the-art technology to offer a world-class, rugged PTZ camera with a best-in-class, feature set.

The X4 Commander boasts top-notch build quality, featuring a long-life silicone wiper, advanced motor technology for its pan and tilt mechanism, and a 37x optical zoom camera module with exceptional low-light performance. Additionally, the camera's perfect balance ensures an MTBF rating exceeding 7 years.

## *Typical Applications*



Town Centres



Highways



Oil & Gas

## *Key Features*

- **UK Design and Manufacture**
- **1/1.8" super low-light CMOS 4MP sensor with 37x optical zoom**
- **Smart IR, up to 500m detection; with White Light options**
- **Rugged, marine-grade finish as standard**
- **Tooled, soft silicone long-life wiper as standard**



# X4 PRODUCT CODES



## **X4 COMMANDER™ RAL 7035 Light Grey No Illumination**

RVX4S-G	37:1 4MP Zoom Ball PTZ, WIPER - Light Grey
RVX4S-POE-G	37:1 4MP Zoom Ball PTZ, WIPER. High-PoE (802.3bt) 60W - Light Grey
RVX4S-ALM-G	37:1 4MP Zoom Ball PTZ, 4 alarm inputs, 2 alarm outputs, WIPER - Light Grey



## **X4 COMMANDER™ RAL 9005 Black No Illumination**

RVX4S-B	37:1 4MP Zoom Ball PTZ, WIPER - Black
RVX4S-POE-B	37:1 4MP Zoom Ball PTZ, WIPER. High-PoE (802.3bt) 60W - Black
RVX4S-ALM-B	37:1 4MP Zoom Ball PTZ, 4 alarm inputs, 2 alarm outputs, WIPER - Black



## **X4 COMMANDER™ RAL 7035 Light Grey IR Illumination**

RVX4S-IR-G	37:1 4MP Zoom Ball PTZ, IR, WIPER - Light Grey
RVX4S-POE-IR-G	37:1 4MP Zoom Ball PTZ, IR, WIPER. High-PoE (802.3bt) 90W - Light Grey
RVX4S-ALM-IR-G	37:1 4MP Zoom Ball PTZ, 4 alarm inputs, 2 alarm outputs, IR, WIPER - Light Grey



## **X4 COMMANDER™ RAL 9005 Black IR Illumination**

RVX4S-IR-B	37:1 4MP Zoom Ball PTZ, IR, WIPER - Black
RVX4S-POE-IR-B	37:1 4MP Zoom Ball PTZ, IR, WIPER. High-PoE (802.3bt) 90W - Black
RVX4S-ALM-IR-B	37:1 4MP Zoom Ball PTZ, 4 alarm inputs, 2 alarm outputs, IR, WIPER - Black



## **X4 COMMANDER™ RAL 7035 Light Grey IR EXTRA Illumination**

RVX4S-IRX-G	37:1 4MP Zoom Ball PTZ, Extra Long Range IR up to 500m, WIPER - Light Grey
RVX4S-POE-IRX-G	37:1 4MP Zoom Ball PTZ, Extra Long Range IR up to 500m, WIPER. High-PoE (802.3bt) 90W - Light Grey
RVX4S-ALM-IRX-G	37:1 4MP Zoom Ball PTZ, 4 alarm inputs, 2 alarm outputs, Extra Long Range IR up to 500m, WIPER - Light Grey



## **X4 COMMANDER™ RAL 9005 Black IR EXTRA Illumination**

RVX4S-IRX-B	37:1 4MP Zoom Ball PTZ, Extra Long Range IR up to 500m, WIPER - Black
RVX4S-POE-IRX-B	37:1 4MP Zoom Ball PTZ, Extra Long Range IR up to 500m, WIPER. High-PoE (802.3bt) 90W - Black
RVX4S-ALM-IRX-B	37:1 4MP Zoom Ball PTZ, 4 alarm inputs, 2 alarm outputs, Extra Long Range IR up to 500m, WIPER - Black



## **X4 COMMANDER™ RAL 7035 Light Grey Dual IR / White Light**

RVX4S-IRWL-G	37:1 4MP Zoom Ball PTZ, IR/ White Light, WIPER - Light Grey
RVX4S-POE-IRWL-G	37:1 4MP Zoom Ball PTZ, IR/ White Light, WIPER. High-PoE (802.3bt) 90W - Light
RVX4S-ALM-IRWL-G	37:1 4MP Zoom Ball PTZ, 4 alarm inputs, 2 alarm outputs, IR/ White Light, WIPER - Light Grey



## **X4 COMMANDER™ RAL 9005 Black Dual IR / White Light**

RVX4S-IRWL-B	37:1 4MP Zoom Ball PTZ, IR/ White Light, WIPER - Black
RVX4S-POE-IRWL-B	37:1 4MP Zoom Ball PTZ, IR/ White Light, WIPER. High-PoE (802.3bt) 90W - Black
RVX4S-ALM-IRWL-B	37:1 4MP Zoom Ball PTZ, 4 alarm inputs, 2 alarm outputs, IR/ White Light, WIPER - Black



## **X4 COMMANDER™ Power Supply**

RVX2-PSU	24V DC PSU for X2/X3/X4 non alarm and alarm ball PTZ
----------	--



## **X4 COMMANDER™ PoE Injector**

RV-POE-INJ-90W	90W Single Port Multi-Gig Power over Ethernet Midspan IEEE 802.3bt Compliant Power Injector
----------------	---



## **X4 COMMANDER™ Cable**

RVX2-CABLE-5	X2/X3/X4 composite cable, compatible with non alarm ball PTZ - 5m
RVX2-CABLE-10	X2/X3/X4 composite cable, compatible with non alarm ball PTZ - 10m
RVX2-CABLE-20	X2/X3/X4 composite cable, compatible with non alarm ball PTZ - 20m





#### X4 COMMANDER™ Alarm Cable

RVX2-CABLE-ALM-5  
RVX2-CABLE-ALM-10

X2/X3/X4 composite cable, compatible with alarms ball PTZ - 5m  
X2/X3/X4 composite cable, compatible with alarms ball PTZ - 10m

#### X4 COMMANDER™ Additional options to be specified with order

RVX4-SD  
RVX4-PC4  
RVX4-3PC4  
RVX4-BIRD-SPIKE

Factory fitted 128 GB on board SD - MUST BE ORDERED WITH CAMERA  
4mm Polycarbonate Window Option  
4mm Polycarbonate Window and 3mm Polycarbonate Lamp Window Option  
Multiple Anti-Perch Bird Spike Attachment



#### X4 COMMANDER™ Brackets - Wall

RVX4-WALL-G  
RVX4-WALL-B

Wall mount bracket - Light Grey  
Wall mount bracket - Black



#### X4 COMMANDER™ Brackets - Swan

RVX4-SWAN-G  
RVX4-SWAN-B

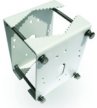
Swan mount bracket - Light Grey  
Swan mount bracket - Black



#### X4 COMMANDER™ Brackets - Standoff

RVX4-STANDOFF-G  
RVX4-STANDOFF-B

120 mm Standoff mount bracket - Light Grey  
120 mm Standoff mount bracket - Black



#### X4 COMMANDER™ Accessories - Pole

RVX4-POLE-G  
RVX4-POLE-B

Pole mount adaptor 60-90mm for RVX4-WALL - Light Grey  
Pole mount adaptor 60-90mm for RVX4-WALL - Black



#### X4 COMMANDER™ Accessories - Corner

RVX4-CNR-G  
RVX4-CNR-B

Corner Mount adaptor for RVX4-WALL - Light Grey  
Corner Mount adaptor for RVX4-WALL - Black



#### X4 COMMANDER™ Special Paint Colours

RVX4-PAINT-SPEC

Cost per dome & associated bracket for special colours – must specify RAL reference number





# X3 STORM

"A corrosion-resistant rugged PTZ built for harsh environments"



# OUR MOST RUGGED...

---

## An Ultra Rugged PTZ Camera

The X3-STORM™ rugged, ball PTZ camera is crafted for surveillance in the harshest environments.

The camera body is made from Electropolished 316 Stainless-Steel, resisting vandalism and extreme conditions. The robust body is complimented by a first-class feature set, ensuring superior resilience and image quality.

## Typical Applications



Tunnels



Coastal



Mining

## Key Features

- Ultra-rugged, marine-grade 316 stainless steel camera body
- 1/2.8" super low-light CMOS 4MP sensor with 30x optical zoom
- UK Design and Manufacture
- Smart IR, up to 300m detection; with White Light options
- Tooled, soft silicone long-life wiper as standard

# X3 PRODUCT CODES



## **X3 STORM™ Electropolished Finish No Illumination**

RVX3S	30:1 4MP, 316 Stainless Steel Zoom Ball PTZ, WIPER - Electropolished finish
RVX3S-POE	30:1 4MP, 316 Stainless Steel Zoom Ball PTZ, WIPER. High-PoE (802.3bt) 60W - Electropolished finish
RVX3S-ALM	30:1 4MP, 316 Stainless Steel Zoom Ball PTZ, 4 alarm inputs, 2 alarm outputs, WIPER - Electropolished finish



## **X3 STORM™ Electropolished Finish IR Illumination**

RVX3S-IR	30:1 4MP, 316 Stainless Steel Zoom Ball PTZ, IR, WIPER - Electropolished finish
RVX3S-POE-IR	30:1 4MP, 316 Stainless Steel Zoom Ball PTZ, IR, WIPER. High-PoE (802.3bt) 90W - Electropolished finish
RVX3S-ALM-IR	30:1 4MP, 316 Stainless Steel Zoom Ball PTZ, 4 alarm inputs, 2 alarm outputs, IR, WIPER - Electropolished finish



## **X3 STORM™ Electropolished Finish Dual IR / White light**

RVX3S-IRWL	30:1 4MP, 316 Stainless Steel Zoom Ball PTZ, IR & White Light, WIPER - Electropolished finish
RVX3S-POE-IRWL	30:1 4MP, 316 Stainless Steel Zoom Ball PTZ, IR & White Light, WIPER. High-PoE (802.3bt) 90W - Electropolished finish
RVX3S-ALM-IRWL	30:1 4MP, 316 Stainless Steel Zoom Ball PTZ, 4 alarm inputs, 2 alarm outputs, IR and White Light, WIPER - Electropolished finish



## **X3 STORM™ Power Supply**

RVX2-PSU	24V DC PSU for X2/X3/X4 non alarm and alarm ball PTZ
----------	--



## **X3 STORM™ PoE Injector**

RV-POE-INJ-90W	90W Single Port Multi-Gig Power over Ethernet Midspan IEEE 802.3bt Compliant Power Injector
----------------	---







#### **X3 STORM™ Wall Bracket**

RVX3-WALL

Stainless Steel Wall mount bracket - Electropolished Finish



#### **X3 STORM™ Standoff Bracket**

RVX3-STANDOFF

120 mm Stainless Steel Standoff mount bracket - Electropolished Finish



#### **X3 STORM™ Cable**

RVX2-CABLE-5

X2/X3/X4 composite cable, compatible with non alarm ball PTZ - 5m

RVX2-CABLE-10

X2/X3/X4 composite cable, compatible with non alarm ball PTZ - 10m

RVX2-CABLE-20

X2/X3/X4 composite cable, compatible with non alarm ball PTZ - 20m



#### **X3 STORM™ Alarm Cable**

RVX2-CABLE-ALM-5

X2/X3/X4 composite cable, compatible with alarms ball PTZ - 5m

RVX2-CABLE-ALM-10

X2/X3/X4 composite cable, compatible with alarms ball PTZ - 10

#### **X3 STORM™ Additional options to be specified with order**

RVX3-SD

Factory fitted 128 GB on board SD - MUST BE ORDERED WITH CAMERA

RVX3-PC4

4mm Polycarbonate Ball Window Option

RVX3-3PC4

4mm Polycarbonate Ball Window and 3mm Polycarbonate Lamp Window option

RVX3-VISOR

Stainless Steel Sun & rain Visor (only applies when camera is mounted in upright position)

RVX3-CNR

Stainless Steel Corner Mount adapter for RVX3-WALL - Electropolished finish

#### **X3 STORM™ SPECIAL PAINT COLOURS**

RVX3-PAINT-SPEC

Cost per dome & associated bracket for special colours – must specify RAL reference number





# X2

## COMBAT

“Our best selling rugged PTZ camera for any environment”

---



# THE TREND SETTER...

---



## Our Original Rugged PTZ Camera

Crafted for challenging outdoor surveillance applications, the X2-COMBAT™ rugged, ball PTZ cameras employ cutting-edge production techniques and state-of-the-art technology to deliver a world-class CCTV camera with unmatched features. The die-cast aluminium body is pretreated prior to powder coating, enhancing environmental resilience and protection against malicious attacks or vandalism.

## Typical Applications



Town Centres



Custodial



CNI

## Key Features

- UK Design and Manufacture
- 1/2.8" super low-light CMOS 4MP sensor with 30x optical zoom
- Smart IR, up to 300m detection; with White Light options
- Rugged, marine-grade finish as standard
- Tooled, soft silicone long-life wiper as standard



# X2 PRODUCT CODES



## **X2 COMBAT™ RAL 7035 Light Grey No Illumination**

RVX2S-G	30:1 4MP Zoom Ball PTZ, WIPER - Light Grey
RVX2S-POE-G	30:1 4MP Zoom Ball PTZ, WIPER. High-PoE (802.3bt) 60W - Light Grey
RVX2S-ALM-G	30:1 4MP Zoom Ball PTZ, 4 alarm inputs, 2 alarm outputs, WIPER - Light Grey



## **X2 COMBAT™ RAL 9005 Black No Illumination**

RVX2S-B	30:1 4MP Zoom Ball PTZ, WIPER - Black
RVX2S-POE-B	30:1 4MP Zoom Ball PTZ, WIPER. High-PoE (802.3bt) 60W - Black
RVX2S-ALM-B	30:1 4MP Zoom Ball PTZ, 4 alarm inputs, 2 alarm outputs, WIPER - Black



## **X2 COMBAT™ RAL 7035 Light Grey IR Illumination**

RVX2S-IR-G	30:1 4MP Zoom Ball PTZ, IR, WIPER - Light Grey
RVX2S-POE-IR-G	30:1 4MP Zoom Ball PTZ, IR, WIPER. High-PoE (802.3bt) 90W - Light Grey
RVX2S-ALM-IR-G	30:1 4MP Zoom Ball PTZ, 4 alarm inputs, 2 alarm outputs, IR, WIPER - Light Grey



## **X2 COMBAT™ RAL 9005 Black IR Illumination**

RVX2S-IR-B	30:1 4MP Zoom Ball PTZ, IR, WIPER - Black
RVX2S-POE-IR-B	30:1 4MP Zoom Ball PTZ, IR, WIPER. High-PoE (802.3bt) 90W - Black
RVX2S-ALM-IR-B	30:1 4MP Zoom Ball PTZ, 4 alarm inputs, 2 alarm outputs, IR, WIPER - Black



## **X2 COMBAT™ RAL 7035 Light Grey Dual IR / White Light**

RVX2S-IRWL-G	30:1 4MP Zoom Ball PTZ, IR/ White Light, WIPER - Light Grey
RVX2S-POE-IRWL-G	30:1 4MP Zoom Ball PTZ, IR/ White Light, WIPER. High-PoE (802.3bt) 90W - Light Grey
RVX2S-ALM-IRWL-G	30:1 4MP Zoom Ball PTZ, 4 alarm inputs, 2 alarm outputs, IR/ White Light, WIPER - Light Grey



## **X2 COMBAT™ RAL 9005 Black Dual IR / White Light**

RVX2S-IRWL-B	30:1 4MP Zoom Ball PTZ, IR/ White Light, WIPER - Black
RVX2S-POE-IRWL-B	30:1 4MP Zoom Ball PTZ, IR/ White Light, WIPER. High-PoE (802.3bt) 90W - Black
RVX2S-ALM-IRWL-B	30:1 4MP Zoom Ball PTZ, 4 alarm inputs, 2 alarm outputs, IR/ White Light, WIPER - Black

## **X2 COMBAT™ Additional options to be specified with order**

RVX2-SD	Factory fitted 128 GB on board SD - MUST BE ORDERED WITH CAMERA
RVX2-PC4	4mm Polycarbonate Ball Window Option
RVX2-3PC4	4mm Polycarbonate Ball Window and 3mm Polycarbonate Lamp Window option



## **X2 COMBAT™ Power Supply**

RVX2-PSU	24V DC PSU for X2/X3/X4 non alarm and alarm ball PTZ
----------	--



## **X2 COMBAT™ PoE Injector**

RV-POE-INJ-90W	90W Single Port Multi-Gig Power over Ethernet Midspan IEEE 802.3bt Compliant Power Injector
----------------	---



## **X2 COMBAT™ Cable**

RVX2-CABLE-5	X2/X3/X4 composite cable, compatible with non alarm ball PTZ - 5m
RVX2-CABLE-10	X2/X3/X4 composite cable, compatible with non alarm ball PTZ - 10m
RVX2-CABLE-20	X2/X3/X4 composite cable, compatible with non alarm ball PTZ - 20m



## **X2 COMBAT™ Alarm Cable**

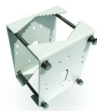
RVX2-CABLE-ALM-5	X2/X3/X4 composite cable, compatible with alarms ball PTZ - 5m
RVX2-CABLE-ALM-10	X2/X3/X4 composite cable, compatible with alarms ball PTZ - 10m



#### X2 COMBAT™ Accessories - Visor

RVX2-VISOR-G  
RVX2-VISOR-B

Sun & rain Visor (only applies when camera is mounted in upright position) - Light Grey  
Sun & rain Visor (only applies when camera is mounted in upright position) - Black



#### X2 COMBAT™ Accessories - Pole

RVX2-POLE-G  
RVX2-POLE-B

Pole mount adaptor 60-90mm for RVX2-WALL - Light Grey  
Pole mount adaptor 60-90mm for RVX2-WALL - Black



#### X2 COMBAT™ Accessories - Corner

RVX2-CNR-G  
RVX2-CNR-B

Corner Mount adapter for RVX2-WALL - Light Grey  
Corner Mount adapter for RVX2-WALL - Black



#### X2 COMBAT™ Brackets - Wall

RVX2-WALL-G  
RVX2-WALL-B

Wall mount bracket - Light Grey  
Wall mount bracket - Black



#### X2 COMBAT™ Brackets - Swan

RVX2-SWAN-G  
RVX2-SWAN-B

Swan mount bracket - Light Grey  
Swan mount bracket - Black



#### X2 COMBAT™ Brackets - Standoff

RVX2-STANDOFF-G  
RVX2-STANDOFF-B

120 mm Standoff mount bracket - Light Grey  
120 mm Standoff mount bracket - Black



#### X2 COMBAT™ Special Paint Colours

RVX4-PAINT-SPEC

Cost per dome & associated bracket for special colours – must specify RAL reference number







# VEGA

“A diverse array of rugged static housings and IP cameras”

---

# RUGGED, **STATIC,** VEGA!

---



## Our Rugged Static Option

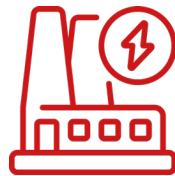
The Redvision VEGA™ stands as a sturdy fixed camera housing, effectively safeguarding against dirt, moisture, and dust infiltration. Remarkably, the VEGA incorporates a specialized soft silicone wiper, enabling the removal of dirt and water from the lens, ensuring clear images even in challenging conditions.

With factory-installed camera options utilising leading-edge sensor technology, integrators are presented with a comprehensive solution for rugged static CCTV camera requirements.

## Typical Applications



Custodial



Power Stations



Ports

## Key Features

- **UK Design and Manufacture**
- Rugged, marine-grade finish as standard
- **Tooled, soft silicone long-life wiper**
- Cable management with built-in junction box
- **Factory fitted camera options**



# VEGA PRODUCT CODES



## VEGA™ 2010 WALL

VEGA-2010-12-WALL	Fully cable managed Camera Housing, including wall bracket and 12V DC heater. Ruggedised marine finish.
VEGA-2010-24-WALL	Fully cable managed Camera Housing, including wall bracket and 24V AC heater. Ruggedised marine finish.
VEGA-2010PW-WALL	Fully cable managed camera housing and wall bracket. POE, 12V DC, 24V AC. Trupark wiper and heater. Ruggedised marine finish.



## VEGA™ 2010 PED

VEGA-2010-12-PED	Fully cable managed Camera Housing, including pedestal bracket and 12V DC heater. Ruggedised marine finish.
VEGA-2010-24-PED	Fully cable managed Camera Housing, including pedestal bracket and 24V AC heater. Ruggedised marine finish.
VEGA-2010PW-PED	Fully cable managed camera housing and pedestal bracket. POE, 12V DC, 24V AC. Trupark wiper and heater. Ruggedised marine finish.



## VEGA™ 2052

VEGA-2052-WALL	Fully cable managed camera, including wall bracket; 12V DC/ POE, 2MP Sony Exmor lowlight sensor, 2.7-13.5mm motorised lens and autofocus. Ruggedised marine finish.
VEGA-2052-PED	Fully cable managed camera, including pedestal bracket; 12V DC/ POE, 2MP Sony Exmor lowlight sensor, 2.7-13.5mm motorised lens and autofocus. Ruggedised marine finish.



## VEGA™ 2065 WALL

VEGA-2065-12-WALL	Fully cable managed camera housing and wall bracket. 12V DC heater. Factory fitted 5MP, 1/2.8" CMOS ABF Box Camera, 3.8-18mm lens. Ruggedised marine finish.
VEGA-2065-12-50-W	Fully cable managed camera housing and wall bracket. 12V DC heater. Factory fitted 5MP, 1/2.8" CMOS ABF Box Camera, 12-50mm lens. Ruggedised marine finish.
VEGA-2065-24-WALL	Fully cable managed camera housing and wall bracket. 24V AC heater. Factory fitted 5MP, 1/2.8" CMOS ABF Box Camera, 3.8-18mm lens. Ruggedised marine finish.
VEGA-2065-24-50-W	Fully cable managed camera housing and wall bracket. 24V AC heater. Factory fitted 5MP, 1/2.8" CMOS ABF Box Camera, 12-50mm lens. Ruggedised marine finish.
VEGA-2065PW-WALL	Fully cable managed camera housing and wall bracket. POE, 12V DC, 24V AC. Factory fitted 5MP, 1/2.8" CMOS ABF Box Camera, 3.8-18mm lens. Trupark wiper and heater. Ruggedised marine finish.
VEGA-2065PW-50-W	Fully cable managed camera housing and wall bracket. POE, 12V DC, 24V AC. Factory fitted 5MP, 1/2.8" CMOS ABF Box Camera, 12-50mm lens. Trupark wiper and heater. Ruggedised marine finish.



## VEGA™ 2065 PED

VEGA-2065-12-PED	Fully cable managed camera housing and pedestal bracket. 12V DC heater. Factory fitted 5MP, 1/2.8" CMOS ABF Box Camera, 3.8-18mm lens. Ruggedised marine finish.
VEGA-2065-12-50-P	Fully cable managed camera housing and pedestal bracket. 12V DC heater. Factory fitted 5MP, 1/2.8" CMOS ABF Box Camera, 12-50mm lens. Ruggedised marine finish.
VEGA-2065-24-PED	Fully cable managed camera housing and pedestal bracket. 24V AC heater. Factory fitted 5MP, 1/2.8" CMOS ABF Box Camera, 3.8-18mm lens. Ruggedised marine finish.
VEGA-2065-24-50-P	Fully cable managed camera housing and pedestal bracket. 24V AC heater. Factory fitted 5MP, 1/2.8" CMOS ABF Box Camera, 12-50mm lens. Ruggedised marine finish.
VEGA-2065PW-PED	Fully cable managed camera housing and pedestal bracket. POE, 12V DC, 24V AC. Factory fitted 5MP, 1/2.8" CMOS ABF Box Camera, 3.8-18mm lens. Trupark wiper and heater. Ruggedised marine finish.
VEGA-2065PW-50-P	Fully cable managed camera housing and pedestal bracket. POE, 12V DC, 24V AC. Factory fitted 5MP, 1/2.8" CMOS ABF Box Camera, 12-50mm lens. Trupark wiper and heater. Ruggedised marine finish.

## VEGA™ Extra

VEGA-WASH	Washer nozzle kit - compatible with standard CCTV wash pumps
VEGA-VISOR	Extendable visor for VEGA Housing
VEGA-CUSTOM-PAINT	Custom paint – must specify RAL colour
VEGA-PC4	4mm Polycarbonate Window Option



# INTRO: **VEGA** THERMAL

---



## VEGA + Thermal Imaging

Introducing a cutting-edge thermal camera, engineered for exceptional performance, enclosed in a rugged housing.

This advanced camera includes a 640x512 resolution and an uncooled VOx Microbolometer. It excels in delivering clear and highly detailed images, even when confronted with total darkness.

## Typical Applications



Perimeter



MOD



## **VEGA** THERMAL **PRODUCT CODES**

---

### **VEGA-THERMAL - 09/15/25/35/50-WALL**

Fully cable managed camera housing and wall bracket.  
POE+, 12V DC, 24 AC. Factory fitted 640 x 512 resolution, <40mK Thermal Box Camera,  
9/15/25/35/50mm fixed lens.  
Ruggedised marine finish.

### **VEGA-THERMAL - 09/15/25/35/50-PED**

Fully cable managed camera housing and wall bracket.  
POE+, 12V DC, 24 AC. Factory fitted 640 x 512 resolution, <40mK Thermal Box Camera,  
9/15/25/35/50mm fixed lens.  
Ruggedised marine finish.



# HUB

“Robust, innovative with 4G/5G compatibility”

# ONE CENTRAL CCTV HUB

---

## Our Rugged 4G/5G Camera Station

The Redvision Hub™ is designed for rapid installation, offering flexible CCTV surveillance in a wide variety of applications.

The Hub™ offers a central connection-point, to bring all your remote monitoring needs together in one tough, rugged, stylish enclosure.

Powered by 110~240VAC or 24VDC, with up to four cameras connected and controlled, flexibility is at the core of the Hub™ design.

## Typical Applications



Construction



Public Space



Utilities

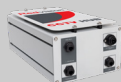
## Key Features

- UK Design and Manufacture
- Rugged, marine-grade finish as standard
- Unlimited 4G/5G data and support
- Simple plug and play installation, ONVIF compliant
- Up to 4 Cameras per Station, directly mounted





# HUB PRODUCT CODES



## CCTV HUB™ - Mains Powered - 1 Channel

RV-HUB-1-P	Rugged Camera Station for 1 PoE Camera, 4G connectivity, 110-240VAC, Pole Mounted
RV-HUB-1-W	Rugged Camera Station for 1 PoE Camera, 4G connectivity, 110-240VAC, Wall Mounted



## CCTV HUB™ - Mains Powered - 2 Channels (max 1 PTZ)

RV-HUB-2-1TB-P	Rugged Camera Station for 2 PoE Cameras (maximum 1 PTZ), 1TB local recording, ONVIF, 4G connectivity, 110-240VAC, Pole Mounted
RV-HUB-2-1TB-W	Rugged Camera Station for 2 PoE Cameras (maximum 1 PTZ), 1TB local recording, ONVIF, 4G connectivity, 110-240VAC, Wall Mounted
RV-HUB-2-4TB-P	Rugged Camera Station for 2 PoE Cameras (maximum 1 PTZ), 4TB local recording, ONVIF, 4G connectivity, 110-240VAC, Pole Mounted
RV-HUB-2-4TB-W	Rugged Camera Station for 2 PoE Cameras (maximum 1 PTZ), 4TB local recording, ONVIF, 4G connectivity, 110-240VAC, Wall Mounted



## CCTV HUB™ - Mains Powered - 4 Channels (max 1 PTZ)

RV-HUB-4-1TB-P	Rugged Camera Station for 4 PoE Cameras (maximum 1 PTZ), 1TB local recording, ONVIF, 4G connectivity, 110-240VAC, Pole Mounted
RV-HUB-4-1TB-W	Rugged Camera Station for 4 PoE Cameras (maximum 1 PTZ), 1TB local recording, ONVIF, 4G connectivity, 110-240VAC, Wall Mounted
RV-HUB-4-4TB-P	Rugged Camera Station for 4 PoE Cameras (maximum 1 PTZ), 4TB local recording, ONVIF, 4G connectivity, 110-240VAC, Pole Mounted
RV-HUB-4-4TB-W	Rugged Camera Station for 4 PoE Cameras (maximum 1 PTZ), 4TB local recording, ONVIF, 4G connectivity, 110-240VAC, Wall Mounted



## CCTV HUB™ - 24VDC Powered - 1 Channel

RV-24-HUB-1-P	Rugged Camera Station for one 24VDC PTZ Camera, 4G connectivity, 24VDC, Pole Mounted
RV-24-HUB-1-W	Rugged Camera Station for one 24VDC PTZ Camera, 4G connectivity, 24VDC, Wall Mounted



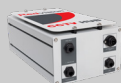
## CCTV HUB™ - 24VDC Powered - 2 Channels (max 1 PTZ)

RV-24-HUB-2-1TB-P	Rugged Camera Station for 1 PoE Camera and one 24VDC PTZ camera, 1TB local recording, ONVIF, 4G connectivity, 24VDC, Pole Mounted
RV-24-HUB-2-1TB-W	Rugged Camera Station for 1 PoE Camera and one 24VDC PTZ camera, 1TB local recording, ONVIF, 4G connectivity, 24VDC, Wall Mounted
RV-24-HUB-2-4TB-P	Rugged Camera Station for 1 PoE Camera and one 24VDC PTZ camera, 4TB local recording, ONVIF, 4G connectivity, 24VDC, Pole Mounted
RV-24-HUB-2-4TB-W	Rugged Camera Station for 1 PoE Camera and one 24VDC PTZ camera, 4TB local recording, ONVIF, 4G connectivity, 24VDC, Wall Mounted



## CCTV HUB™ - 24VDC Powered - 4 Channels (max 1 PTZ)

RV-24-HUB-4-1TB-P	Rugged Camera Station for 3 PoE Camera and one 24VDC PTZ camera, 1TB local recording, ONVIF, 4G connectivity, 24VDC, Pole Mounted
RV-24-HUB-4-1TB-W	Rugged Camera Station for 3 PoE Camera and one 24VDC PTZ camera, 1TB local recording, ONVIF, 4G connectivity, 24VDC, Wall Mounted
RV-24-HUB-4-4TB-P	Rugged Camera Station for 3 PoE Camera and one 24VDC PTZ camera, 4TB local recording, ONVIF, 4G connectivity, 24VDC, Pole Mounted
RV-24-HUB-4-4TB-W	Rugged Camera Station for 3 PoE Camera and one 24VDC PTZ camera, 4TB local recording, ONVIF, 4G connectivity, 24VDC, Wall Mounted



## 5G CCTV HUB™ - Mains Powered - 1 Channel

RV-HUB5G-1-P	Rugged Camera Station for 1 PoE Camera, 5G & LAN connectivity, 110-240VAC, Pole Mounted
RV-HUB5G-1-W	Rugged Camera Station for 1 PoE Camera, 5G & LAN connectivity, 110-240VAC, Wall Mounted



## 5G CCTV HUB™ - Mains Powered - 2 Channels (max 1 PTZ)

RV-HUB5G-2-1TB-P	Rugged Camera Station for 2 PoE Cameras (maximum 1 PTZ), 1TB local recording, ONVIF, 5G connectivity, 110-240VAC, Pole Mounted
RV-HUB5G-2-1TB-W	Rugged Camera Station for 2 PoE Cameras (maximum 1 PTZ), 1TB local recording, ONVIF, 5G connectivity, 110-240VAC, Wall Mounted
RV-HUB5G-2-4TB-P	Rugged Camera Station for 2 PoE Cameras (maximum 1 PTZ), 4TB local recording, ONVIF, 5G connectivity, 110-240VAC, Pole Mounted
RV-HUB5G-2-4TB-W	Rugged Camera Station for 2 PoE Cameras (maximum 1 PTZ), 4TB local recording, ONVIF, 5G connectivity, 110-240VAC, Wall Mounted



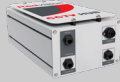
#### 5G CCTV HUB™ - Mains Powered - 4 Channels (max 1 PTZ)

RV-HUB5G-4-1TB-P	Rugged Camera Station for 4 PoE Cameras (maximum 1 PTZ), 1TB local recording, ONVIF, 5G connectivity, 110-240VAC, Pole Mounted
RV-HUB5G-4-1TB-W	Rugged Camera Station for 4 PoE Cameras (maximum 1 PTZ), 1TB local recording, ONVIF, 5G connectivity, 110-240VAC, Wall Mounted
RV-HUB5G-4-4TB-P	Rugged Camera Station for 4 PoE Cameras (maximum 1 PTZ), 4TB local recording, ONVIF, 5G connectivity, 110-240VAC, Pole Mounted
RV-HUB5G-4-4TB-W	Rugged Camera Station for 4 PoE Cameras (maximum 1 PTZ), 4TB local recording, ONVIF, 5G connectivity, 110-240VAC, Wall Mounted



#### CCTV HUB™ - 24VDC Powered - 1 Channel

RV-24-HUB5G-1-P	Rugged Camera Station for one 24VDC PTZ Camera, 5G connectivity, 24VDC, Pole Mounted
RV-24-HUB5G-1-W	Rugged Camera Station for one 24VDC PTZ Camera, 5G connectivity, 24VDC, Wall Mounted



#### CCTV HUB™ - 24VDC Powered - 2 Channels (max 1 PTZ)

RV-24-HUB5G-2-1TB-P	Rugged Camera Station for 1 PoE Camera and one 24VDC PTZ camera, 1TB local recording, ONVIF, 5G connectivity, 24VDC, Pole Mounted
RV-24-HUB5G-2-1TB-W	Rugged Camera Station for 1 PoE Camera and one 24VDC PTZ camera, 1TB local recording, ONVIF, 5G connectivity, 24VDC, Wall Mounted
RV-24-HUB5G-2-4TB-P	Rugged Camera Station for 1 PoE Camera and one 24VDC PTZ camera, 4TB local recording, ONVIF, 5G connectivity, 24VDC, Pole Mounted
RV-24-HUB5G-2-4TB-W	Rugged Camera Station for 1 PoE Camera and one 24VDC PTZ camera, 4TB local recording, ONVIF, 5G connectivity, 24VDC, Wall Mounted



#### CCTV HUB™ - 24VDC Powered - 4 Channels (max 1 PTZ)

RV-24-HUB5G-4-1TB-P	Rugged Camera Station for 3 PoE Camera and one 24VDC PTZ camera, 1TB local recording, ONVIF, 5G connectivity, 24VDC, Pole Mounted
RV-24-HUB5G-4-1TB-W	Rugged Camera Station for 3 PoE Camera and one 24VDC PTZ camera, 1TB local recording, ONVIF, 5G connectivity, 24VDC, Wall Mounted
RV-24-HUB5G-4-4TB-P	Rugged Camera Station for 3 PoE Camera and one 24VDC PTZ camera, 4TB local recording, ONVIF, 5G connectivity, 24VDC, Pole Mounted
RV-24-HUB5G-4-4TB-W	Rugged Camera Station for 3 PoE Camera and one 24VDC PTZ camera, 4TB local recording, ONVIF, 5G connectivity, 24VDC, Wall Mounted



#### CCTV HUB™ - Data

RV-HUB-DYN-UNL	3 Mobile Dynamic Public IP Unlimited Data SIM (Subject to Network Operator's Terms & Conditions) with Redvision Engineer Remote Configuration and Support - Price per Month
RV-HUB-FIXED-UNL	3 Mobile Fixed Public IP Unlimited Data SIM (Subject to Network Operator's Terms & Conditions) with Redvision Engineer Remote Configuration and Support - Price per Month
RV-HUB-THRD-PTY	Redvision Factory Fitting of Third Party Supplied Sim Card



#### CCTV HUB™ - Software Viewing Options

RedVu CMS	Server/Client Based, Support Centralised and Distributed Video Management
VMS1000	Open Platform Video Management System, Powered by Digifort



#### CCTV HUB™ - Mains Cable

RV-HUB-CABLE-5	5m External Rated Three Core Flying Mains Power Lead for CCTV Hub
RV-HUB-CABLE-10	10m External Rated Three Core Flying Mains Power Lead for CCTV Hub
RV-HUB-CABLE-20	20m External Rated Three Core Flying Mains Power Lead for CCTV Hub



#### CCTV HUB™ - 24VDC Cable

RV-24-HUB-CABLE-5	5m External Rated 24VDC Power Lead for CCTV Hub
RV-24-HUB-CABLE-10	10m External Rated 24VDC Power Lead for CCTV Hub
RV-24-HUB-CABLE-20	20m External Rated 24VDC Power Lead for CCTV Hub

#### CCTV HUB™ - Brackets and Accessories

RV-HUB-WALL-G	Hub Mounted X-series PTZ Bracket - Wall
RV-HUB-ADPT-G	Hub Mounted Adaptor Plate for Knight Series Cameras
RVX2-CABLE-HUB	X2/X3/X4 composite cable with Hub attachment, compatible with non alarm ball PTZ - 500mm
RVX2-CABLE-HUB-10	X2/X3/X4 composite cable with Hub attachment, compatible with non alarm ball PTZ - 10m
RVX2-CABLE-HUB-20	X2/X3/X4 composite cable with Hub attachment, compatible with non alarm ball PTZ - 20m

#### CCTV HUB™ - Custom

RV-HUB-CUSTOM	Custom Requirements Available on Request
---------------	--



# REDCOP

“Your rugged temporary deployment solution”



# RAPID, REMOTE, REDCOP



## Remote, Re-deployable, Rugged.

Introducing Redcop™, an exceptionally robust, trailer-mounted CCTV security system made in the UK, purpose-built for swift deployment to remote and vulnerable locations. This cutting-edge system is delivered directly to the site and can be effortlessly set up by trained engineers in no time.

When paired with a reliable 24/7 monitoring service, Redcop™ ensures continuous site surveillance, offering unwavering protection from the instant of installation. With this comprehensive CCTV security solution in place, operators can respond promptly to any on-site incidents as they unfold, enabling heightened security and peace of mind.

## Typical Applications



Construction



Highways



Void Property

## Key Features

- UK Design and Manufacture
- Rugged 6m tower for extended range and view
- Full HD video for high quality CCTV
- Lithium iron battery, solar and hydrogen power options
- Analytics or PIR detection systems fully integrated





# VMS 1000

POWERED BY  digifort

"Our Flagship open-platform control system for Redvision cameras and recorders."

# WORLD LEADING PLATFORM

---

## An Open-Platform Video Management System

The Redvision VMS1000™, powered by market-leading Digifort software, is a server-based, video management software and analytics system for effective digital surveillance, automation and access control.

VMS1000 stands as the world-leading open-platform video management and analytics solution, offering seamless integration with a vast array of over 400 camera manufacturer brands, comprising a staggering selection of more than 10,000 products.

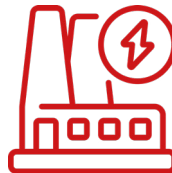
## Typical Applications



Custodial



Highways



Power Stations

## Key Features

- **Powered by market-leading Digifort**
- **Open-platform: deep integration with over 10,000 cameras**
- **Ongoing support with no recurring VMS license fees**
- **Scalable, enterprise solution with vast fail-over options**
- **Third part integrations including Cortech Datalog MV**

Redvision™  
VMS1000





# KNIGHT

## SERIES

“ONVIF compliant CCTV products enhancing VEGA, HUB and RedCop Systems”

---

# DAY OR KNIGHT...

---



## Quality Static IP Cameras and NVRs

The Knight Series range of static cameras utilises leading-edge sensor technology, boasting a Super WDR low-light CMOS sensor for high-quality images in daytime or night-time settings; with integral IR illumination to provide superb images even at zero lux.

Knight-Stor™ NVRs offer stunning recorded images, coupled with ease of use, feature-rich user interface and a sturdy but sleek design that would fit into any environment.

## Typical Applications



Retail



Hospitals



Schools

## Key Features

- **Super low-light CMOS Sensor**
- **Plug-and-play PoE**
- **Integral Smart Infra-Red**
- **ONVIF Profile S, G & T Compliant**
- **Central monitoring with the RedVu CMS and App**



# KNIGHT PRODUCT CODES



## KNIGHT-SERIES™ HD IP Cameras

RVK-W20-IR

KNIGHT WATCH 1/2.8" CMOS, 2MP Bullet Camera, 2.7~13.5mm motorized lens, 60m IR, IK10



## KNIGHT-SERIES™ HD IP Cameras

RVK-E10-IR

KNIGHT EYE 1/2.8" CMOS, 2MP Eyeball Dome Camera, 2.7~13.5mm motorized lens, 40m IR



## KNIGHT-SERIES™ HD IP Cameras

RVK-V50

KNIGHT VIEW 5MP, 1/2.8" CMOS Sensor ABF Box Camera

RVK-V10-LENS-18

Manual Focus/ Auto Iris, 3.8mm ~ 18mm manual varifocal lens for Knight View box camera

RVK-V10-LENS-50

Manual Focus/ Auto Iris, 12mm ~ 50mm manual varifocal lens for Knight View box camera



## KNIGHT-SERIES™ - KNIGHT EYE 40

RVK-E40-IR

KNIGHT EYE 40 1/1.8" CMOS, 4MP Eyeball Dome Camera, 3.6~11mm motorized lens, 50m IR

RVK-E40-IRWL

KNIGHT EYE 40 1/1.8" CMOS, 4MP Eyeball Dome Camera, 4mm fixed lens, 40m IR, 30m White Light



## KNIGHT-SERIES™ - KNIGHT SIGHT 40

RVK-ST40-IR

KNIGHT SIGHT 40 1/2.8" CMOS, 4MP Vandal Resistant Dome Camera, 2.7~13.5mm Motorised Lens, IK10, 40m IR



## KNIGHT-SERIES™ - KNIGHT WATCH 40

RVK-W40-IR

KNIGHT WATCH 40 1/1.8" CMOS, 4MP Bullet Camera, 3.6~11mm motorized lens, 60m IR

RVK-W40-IRWL

KNIGHT WATCH 40 1/1.8" CMOS, 4MP Bullet Camera, 4mm fixed lens, 50m IR, 40m White Light



## KNIGHT-SERIES™ - KNIGHT SCAN 40

RVK-SN40-IR

KNIGHT SCAN 40 1/2.8" CMOS, 4MP Minidome Camera, 2.8mm Fixed Lens, IK10, 15m IR



## KNIGHT-SERIES™ Brackets and Accessories

RVK-POLE

Pole Clamp for Knight Series Cameras



## KNIGHT-SERIES™ Brackets and Accessories

RVK-EW-JB

Junction Box for Knight Eye and Knight Watch Cameras



## KNIGHT-SERIES™ Brackets and Accessories

RVK-ST-JB

Junction Box for Knight Sight Cameras



## KNIGHT-SERIES™ Brackets and Accessories

RVK-SN-JB

Junction Box for Knight Scan Cameras





#### KNIGHT-SERIES™ HD IP Network Video Recorders

RVK-STOR-08-0TB  
RVK-STOR-08-1TB  
RVK-STOR-08-4TB  
RVK-STOR-08-6TB  
RVK-STOR-08-8TB  
RVK-STOR-08-12TB

KNIGHT STOR, 8 Channel NVR, 8 PoE Ports - No Hard Disk Drive  
KNIGHT STOR, 8 Channel NVR, 8 PoE Ports - 1TB Hard Disk Drive  
KNIGHT STOR, 8 Channel NVR, 8 PoE Ports - 4TB Hard Disk Drive  
KNIGHT STOR, 8 Channel NVR, 8 PoE Ports - 6TB Hard Disk Drive  
KNIGHT STOR, 8 Channel NVR, 8 PoE Ports - 8TB Hard Disk Drive  
KNIGHT STOR, 8 Channel NVR, 8 PoE Ports - 12TB Hard Disk Drive



#### KNIGHT-SERIES™ HD IP Network Video Recorders

RVK-STOR-32-0TB  
RVK-STOR-32-8TB  
RVK-STOR-32-16TB  
RVK-STOR-32-24TB  
RVK-STOR-32-48TB

KNIGHT STOR, 32 Channel NVR, 16 PoE Ports - No Hard Disk Drive  
KNIGHT STOR, 32 Channel NVR, 16 PoE Ports - 2 x 4TB Hard Disk Drive  
KNIGHT STOR, 32 Channel NVR, 16 PoE Ports - 4 x 4TB Hard Disk Drive  
KNIGHT STOR, 32 Channel NVR, 16 PoE Ports - 2 x 12TB Hard Disk Drive  
KNIGHT STOR, 32 Channel NVR, 16 PoE Ports - 4 x 12TB Hard Disk Drive



# CONTACT

---



## **Redvision CCTV Limited**

Alpha House  
Blacknest Road  
Blacknest  
Alton, Hants  
GU34 4PX



**+44 (0) 1420 448448**



**sales@redvisioncctv.com**



**www.redvisioncctv.com**



**Redvision CCTV Limited**



**@redvisioncctv\_uk**



**@RedVisionCCTV**



**@redvisioncctv6022**

